



Important!

Please give copies to all your VW Technicians

Technical Bulletin

Subject: Instrument Cluster, Clock Runs Too Fast

Group: 90

Number: 05-06

Model(s): Touareg

2004 ▶ VIN: 7L_4D081470

Date: Nov. 9, 2005

Supersedes T.B. Group 90 number 05-03 dated Apr. 27, 2005 due to ending Vehicle Identification Number change.

Condition

The customer complains that the instrument cluster clock gains approximately 30 seconds per day.

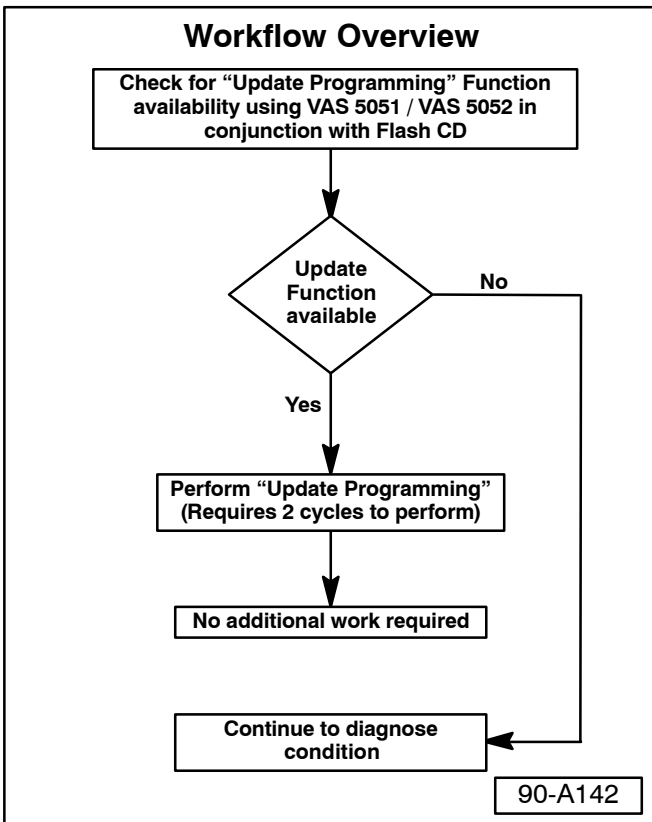
Condition is corrected by an update of the instrument cluster software via flash CD.



Tip:

Update instrument cluster programming requires two cycles to complete. Follow instructions completely.

Affected instrument cluster OE Part Nos. (not replacement Part Nos.):



Part No. (US)	Software Version	Updated Software Version
7L6 920 980 M, N, P	2921	2922*
7L6 920 970 L, M	1821	1822*
Part No. (Canada)		
7L6 920 870 M, N, P	1821	1822*
7L6 920 880 P, Q, R,S	2921	2922*

*) Update has been completed. DO NOT perform Bulletin.

Service

◀ See Workflow Overview for Service Procedures incorporated into this Technical Bulletin.

Tool requirements

- ◆ VAS 5051 or 5052 (with Basis CD V.07.00.00 and the Brand CD V.07.55.01 or higher) with old diagnosis logs erased prior to start.
- ◆ "Update - Programming" (flashing) CD W42TOURCLUSTER.



Important!

Please give copies to all your VW Technicians

Technical Bulletin



Tip:

Additional copies of the "Update - Programming" CD (Literature Number W42TOURCLUSTER) may be ordered from the Volkswagen Technical Literature Ordering Center at www.vw.dds ltd.com, or by calling 1-800-544-8021 from 8:00 a.m. to 8:00 p.m. EST Monday through Friday. This number can be dialed in both the United States and Canada.

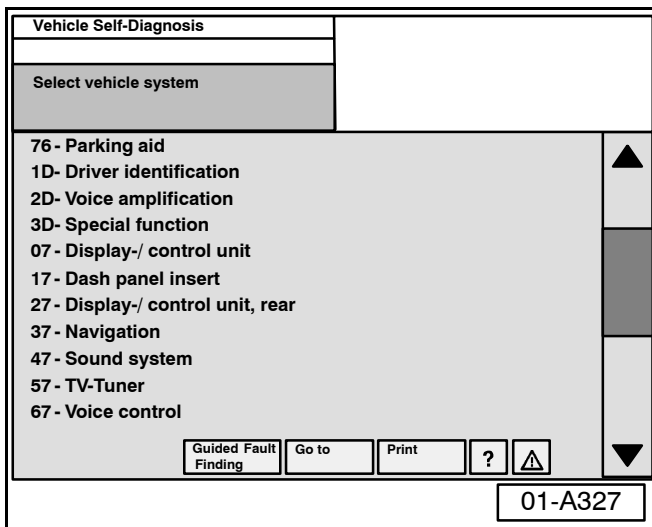
Vehicle requirements

- ◆ **Battery MUST have minimum no-load charge of 12.5V** (failure to maintain voltage during update process can lead to Instrument cluster failure) (use an approved battery charger to maintain battery voltage).
- ◆ VAS 5051: connected to vehicle and to 110V AC Power supply at all times during procedure.
- ◆ VAS 5052: connected to vehicle with battery voltage requirements met.
- ◆ Any appliances with high electromagnetic radiation (i.e. mobile phones) switched OFF.

Coding for address word "17 - Dash panel insert & "19 - Diagnostic interface for data-bus", Recording

Record dash panel insert (instrument cluster) coding as follows:

- Connect the VAS 5051/5052 Diagnostic tool.
- Switch ignition ON.
- From the Start-up screen, select "Vehicle Self-Diagnosis".
- ◀ - Select address word "17-Dash panel insert".





Important!

Please give copies to all your VW Technicians

Technical Bulletin

Vehicle Self-Diagnosis	17 - Dash panel insert
	Component Part Number
	Component Description
	Coding XXXXX ←
	Dealership number XXXXX
Vehicle system with a number of control units	
<input type="button" value="Go to"/> <input type="button" value="Print"/> <input type="button" value="?"/> <input type="button" value="▲"/> <input type="button" value="▶"/>	
01-A328	

- Record dash panel insert module coding number:
- Repeat sequence for address word “19 - Diagnostic interface for data-bus.”

Vehicle Self-Diagnosis	
Select vehicle system	
1D- Driver identification 2D- Voice amplification 3D- Special function 6D- Rear lid electronics 07 - Display-/ control unit 17 - Dash panel insert 27 - Display-/ control unit, rear 37 - Navigation 47 - Sound system 57 - TV-Tuner 67 - Voice control	▲ ▼
<input type="button" value="Guided Fault Finding"/> <input type="button" value="Go to"/> <input type="button" value="Print"/> <input type="button" value="?"/> <input type="button" value="▲"/>	
01-A329	

Procedure

- Disconnect two electrical connectors for cooling fans -V7- and -V177- (see Repair Manual, *Engine Mechanical, 19 - Cooling systems*).
- Switch ignition ON.
- Switch VAS 5051/5052 ON and insert Update CD into CD drive as soon as start screen appears.
- Select vehicle system “17 - Dash panel insert”.

Vehicle Self-Diagnosis	17 - Dash panel insert
	Component part number
	Component description
	Coding XXXX
	Dealership number XXXXX
Select diagnosis function	
02 - Interrogate fault memory 03 - Final control diagnosis 05 - Erase fault memory 06 - End output 07 - Code control unit Coding subbussystem 08 - Read Measuring Value Block 10 - Adaption 16 - Access permission Enabling (pin) Adaptation channel 50 (pin)	▲ ▼
<input type="button" value="◀"/> <input type="button" value="Guided Fault Finding"/> <input type="button" value="Go to"/> <input type="button" value="Print"/> <input type="button" value="?"/> <input type="button" value="▲"/>	
01-A330	

- Select diagnosis function “02 - Interrogate fault memory”.
 - Select backward arrow ◀ on navigation bar.
 - Select diagnosis function “05 - Erase fault memory”.
- With fault memory erased:
- Select backward arrow ◀ on navigation bar.



Important!

Please give copies to all your VW Technicians

Technical Bulletin

Vehicle Self-Diagnosis	17 - Dash panel insert
Select	Component part number
diagnosis function	Component description
	Coding XXXXX
	Dealership number XXXXX
07 - Code control unit Coding subbussystem 08 - Read data block 10 - Adaption 16 - Access permission Enabling (pin) Adaptation channel 50 (pin) Challenge reading out Immob IV Enabling Immob IV Identificaion services Update - Programming	
<input type="button" value="Go to"/> <input type="button" value="Print"/> <input type="button" value="?"/> <input type="button" value="⚠"/>	
01-A331	

◀ – Select “Update - Programming”.

– Select forward arrow ▶ on navigation bar.

Vehicle Self-Diagnosis	17 - Dash panel insert
Update - Programming	Component part number
Programming can be carried out.	Component description
	Coding XXXXX
	Dealership number XXXXX
WARNING! The programme version stored in the control unit will be erased It will be programmed with the new version XXXX The erasing programming process will last roughly XX minutes. The part number in the control unit identification may change. Vehicle specific data (coding, adaptation etc.) might be lost. It must be checked after successful programming After the continue button has been pressed the process cannot be cancelled. IMPORTANT -- PLEASE NOTE: Switching ignition off or disconnecting the diagnostic connector during programming may completely destroy the control module!	
<input type="button" value="Go to"/> <input type="button" value="Print"/> <input type="button" value="?"/> <input type="button" value="⚠"/> <input type="button" value="▶"/>	
01-A332	

◀ ◆ Similar screen appears.

⚠ **Note:**

Do not interrupt or cancel the flash procedure.

⚠ **Note:**

After the first programming cycle the ignition has to be switched OFF and back ON.

Vehicle Self-Diagnosis	17 - Dash panel insert
Update - Programming	Component part number
Programming log	Component description
Save result?	Coding XXXX
	Dealership number XXXXX
Expanded identification old XXXXXXXXXX	Expanded identification new XXXXXXXXXX
Description	Prog. uncompl.?
Coding xxxxx	Coding xxxxx
Dealership number xxxxx	Dealership number xxxxx
Unit number 942	Unit number 0
Importer number 444	Importer number 444
Programming status	
Status	Programming not ended (7)
Counter programming status	2
Counter successful attempts	1
Programming pre-condition	fulfilled
<input type="button" value="Go to"/> <input type="button" value="Print"/> <input type="button" value="?"/> <input type="button" value="⚠"/> <input type="button" value="▶"/>	
01-A333	

◀ ◆ After a successful first flash cycle you should see a similar screen

– Select forward arrow ▶ on navigation bar.



Important!

Please give copies to all your VW Technicians

Technical Bulletin

Vehicle Self-Diagnosis	17 - Dash panel insert
Update - Programming	Component part number
Erase fault memory	Component description
	Coding XXXXX
	Dealership number XXXXX
<p>The programming causes fault records in related control units. The fault memories of all control units in the vehicle must be erased.</p> <p>Pressing the Continue button will automatically erase the fault memories.</p> <p>Pressing the Back button will not erase fault memories</p>	
<p>◀ Go to Print ? ⚠ ▶</p>	
01-A334	

- ◀ ◆ Similar screen appears.
 - Select backward arrow ◀ on navigation bar.

⚠ **Note:**

DO NOT erase fault memory! The flash procedure requires two update cycles.

⚠ **Note:**

- ◆ After the first cycle DO NOT click on the forward arrow ▶ on navigation bar and DO NOT erase the fault codes. The second cycle has to be started first.

- ◆ If the second cycle is accidentally skipped, the GND wire of the (comfort battery) has to be disconnected and after 10 minutes reconnected in order to reset the system.

- ◀ - Select "Update - Programming" to initiate second cycle.

Vehicle Self-Diagnosis	17 - Dash panel insert
Select diagnosis function	Component part number
Update - Programming	Component description
	Coding XXXXX
	Dealership number XXXXX
<p>◀ Go to Print ? ⚠ ▶</p>	
01-A490	

Vehicle Self-Diagnosis	17 - Dash panel insert
Update - Programming	Component part number
Programming can be carried out.	Component description
	Coding XXXXX
	Dealership number XXXXX
<p>WARNING!</p> <p>The programme version stored in the control unit will be erased It will be programmed with the new version XXXX</p> <p>The erasing programming process will last roughly XX minutes. The part number in the control unit identification may change. Vehicle specific data (coding, adaptation etc.) might be lost. It must be checked after successful programming</p> <p>After the continue button has been pressed the process cannot be cancelled.</p> <p>IMPORTANT -- PLEASE NOTE:</p> <p>Switching ignition off or disconnecting the diagnostic connector during programming may completely destroy the control module!</p>	
<p>◀ Go to Print ? ⚠ ▶</p>	
01-A335	

- ◀ ◆ Similar screen appears.
 - Select forward arrow ▶ on navigation bar.

⚠ **Note:**

Do not interrupt or cancel the flash procedure.

After second programming cycle:

- Switch ignition OFF and back ON.



Important!

Please give copies to all your VW Technicians

Technical Bulletin

Vehicle Self-Diagnosis	17 - Dash panel insert
Update - Programming	Component part number
Programming log	Component description
Save result?	Coding XXXX
	Dealership number XXXXX
Expanded identification old XXXXXXXXXX	Expanded identification new XXXXXXXXXX
Prog. uncompl.?	Description
Coding xxxxx	Coding xxxxx
Dealership number xxxxx	Dealership number xxxxx
Unit number 52477	Unit number 52477
Importer number 444	Importer number 444
Programming status	
Status	no malfunction
Counter programming status	5
Counter successful attempts	4
Programming pre-condition	fulfilled
<input type="button" value="Go to"/> <input type="button" value="Print"/> <input type="button" value="?"/> <input type="button" value="⚠"/> <input type="button" value="▶"/>	
01-A336	

- ◀ – After successful second flash, a similar screen appears.
- Select forward arrow ▶ on navigation bar.

Vehicle Self-Diagnosis	17 - Dash panel insert
Update - Programming	Component part number
Erase fault memory	Component description
	Coding XXXXX
	Dealership number XXXXX
<p>The programming causes fault records in related control units. The fault memories of all control units in the vehicle must be erased.</p> <p>Pressing the Continue button will automatically erase the fault memories.</p> <p>Pressing the Back button will not erase fault memories</p>	
<input type="button" value="◀"/> <input type="button" value="Go to"/> <input type="button" value="Print"/> <input type="button" value="?"/> <input type="button" value="⚠"/> <input type="button" value="▶"/>	
01-A337	

- ◀ ◆ Similar screen appears.
- Select forward arrow ▶ on navigation bar to erase fault codes.

Vehicle Self-Diagnosis	17 - Dash panel insert
Select diagnosis function	Component part number
	Component description
	Coding XXXX
	Dealership number XXXXX
02 - Interrogate fault memory 03 - Final control diagnosis 05 - Erase fault memory 06 - End output 07 - Code control unit Coding subbussystem 08 - Read Measuring Value Block 10 - Adaption 16 - Access permission Enabling (pin) Adaptation channel 50 (pin)	
<input type="button" value="◀"/> <input type="button" value="Guided Fault Finding"/> <input type="button" value="Go to"/> <input type="button" value="Print"/> <input type="button" value="?"/> <input type="button" value="⚠"/>	
01-A338	

- ◀ – Check coding of “17 - Dash panel insert” and “19 - Diagnostic interface for data-bus” and re-code (using previously recorded coding) if necessary.



Important!

Please give copies to all your VW Technicians

Technical Bulletin

Vehicle Self-Diagnosis	17 - Dash panel insert
10 - Adaption	Component part number
Read and test channel 4	Component description
	Coding 103
	Dealership number XXXXX
0 2 8	
<input type="button" value="Keyboard"/> <input type="button" value="Save"/>	
<input type="button" value="Go to"/> <input type="button" value="Print"/> <input type="button" value="?"/> <input type="button" value="⚠"/>	
01-A339	

Check language settings after update.

← – Language can be changed in address word “17 - Dash panel insert”, Diagnosis function “10 - Adaption”, Channel “4”.

◆ 2 = English

◆ 3 = French

– Reconnect two electrical connectors for cooling fans -V7- and -V177- (see Repair Manual, *Engine Mechanical*, 19 - Cooling systems).

When procedure applies to vehicles within the New Vehicle Limited Warranty, use the following:	
Claim Type:	W2
Part Identifier:	9025
Damage Code:	9025 40 000 1
Labor Operation:	9025 2542 70TU
Diagnostic Time:	No Diagnostic Time Allowed
Claim Comment: Type “As Per Technical Bulletin V900506” in comment section of Warranty claim.	