

**Part Number: PTR54-18130**  
**Kit Contents**

Item #	Qty.	Service Part #	Description
1	1		Adapter
2	1		Rear Mount Bracket Assembly
		PTR54-18130-AA	Hardware Kit
3	1		2-Pc. Boot Cover
4	1		D-Shape Grommet
5	1		Adapter Bolt
6	1		Installation Instructions

**Additional Items Required For Installation**

Item #	Quantity Reqd.	Description
none		

**Conflicts**

PPO Code	Description
	Automatic Transmission

**Recommended Tools**

<b>Safety Tools</b>		
Safety Glasses or Goggles		
<b>Installation Tools</b>		
Item#		
1	14mm Deep Socket	3/8" Drive
2	12mm Socket	3/8" Drive, 12 point
3	10mm Deep Socket	3/8" Drive
4	7mm Ball End Hex Socket	3/8" Drive
5	12mm Ratchet	Combo Wrench
6	Pliers, Needle Nose	
7	Ratchet	3/8" Drive
8	8" Extension	3/8" Drive
9	3" Extension	3/8" Drive
10	Torque Wrench	3/8" Drive
<b>Special Chemicals</b>		Blue 242 Loctite

**General Applicability**

Scion FR-S: 2013 and up with 6 speed manual transmission
--

**Vehicle Service Parts** (may be required for reassembly)

Item #	Quantity Reqd.	Description
1	1	Clip Part No. SU003-00898

\*Mandatory

**Torque Specifications**

Hardware Type	Metric Torque (N·m)	SAE Torque (ft·lbf)
Adapter Bolt	9.5	7
Rear Bracket Bolt	20.5	18
Grommet Bracket Bolt	16.25	12
Support Bracket Bolt	51.5	38



**Legend**

- STOP:** Damage to the vehicle may occur. Do not proceed until process has been complied with.
- OPERATOR SAFETY:** Use caution to avoid risk of injury.
- CAUTION:** A process that must be carefully observed in order to reduce the risk of damage to the accessory/vehicle and to ensure a quality installation.
- TOOLS & EQUIPMENT:** Used in Figures calls out the specific tools and equipment recommended for this process.
- REVISION MARK:** This mark highlights a change in installation with respect to previous issue.
- SAFETY TORQUE:** This mark indicates that torque is related to safety.

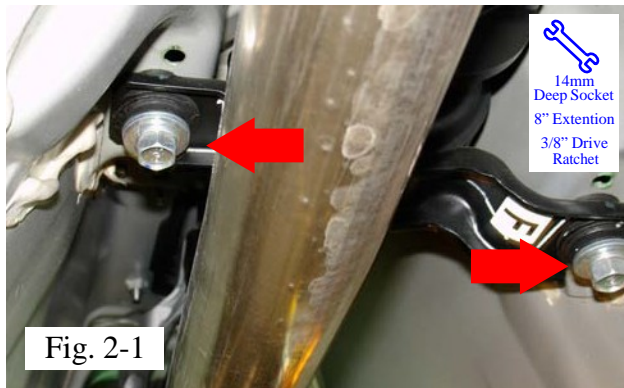
Care must be taken when installing this accessory to ensure damage does not occur to the vehicle. The installation of this accessory should follow approved guidelines to ensure a quality installation.

These guidelines can be found in the "Accessory Installation Practices" document.

This document covers such items as:-

- Vehicle Protection (use of covers and blankets, cleaning chemicals, etc.).
- Safety (eye protection, rechecking torque procedure, etc.).
- Vehicle Disassembly/Reassembly (panel removal, part storage, etc.).
- Electrical Component Disassembly/Reassembly (battery disconnection, connector removal, etc.).

Please see your Toyota dealer for a copy of this document.



### 1. Vehicle and Parts Preparation

- (a) Check kit for contents and damage.
- (b) Position vehicle on lift/hoist for proper installation.
- (c) Put transmission in neutral position
- + (d) Let vehicle cool down until transmission and exhaust are cool to touch.



### 2. Remove/Loosen Factory Components

- (a) Remove 2 bolts on the driveshaft support bearing bracket allowing the driveshaft to easily drop down. (Fig. 2-1)
- ⚠ (b) Carefully pull/peel the OE boot down away from the shift tower. Care must be exercised with the boot during movement to not catch on the clip inside the boot which may cause a tear or ripping of the boot. (Fig. 2-2)
- (c) Use needle nose pliers to remove the exposed retaining clip from the OE shift control shaft. Remove thrust washer located behind retaining clip. Save retaining clip for re-installation of shift control shaft. (Fig. 2-3)
- (d) Push/slide the shift control shaft out from the shift lever assembly towards the driver side of the vehicle. Leave shift control shaft hanging down. (Fig. 2-3)
- (e) Remove the OE boot from the shift shaft by pulling/peeling towards the rear of the vehicle. Save the boot for re-use to return the vehicle to stock condition.

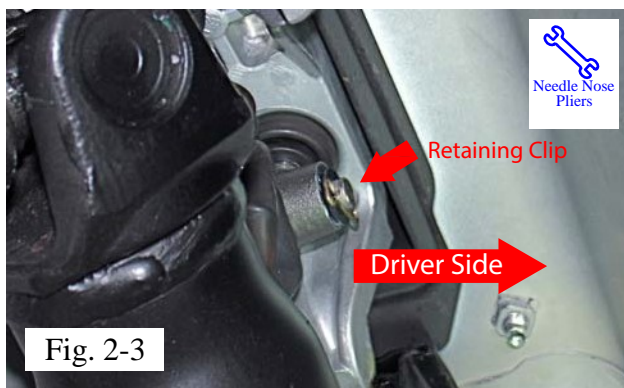




Fig. 3-1

### 3. Install TRD Quick Shifter

- (a) Install the box portion (Item 3a) of the 2 pc. boot over the shift lever lower housing with the rectangular opening facing the front of the vehicle. The round hole in the Boot 3a needs to be pulled/peeled over the OE shift lever lower housing. (Fig. 3-1)

**Note:** Components shown in Fig. 3-1 are off vehicle for clarity purpose only.

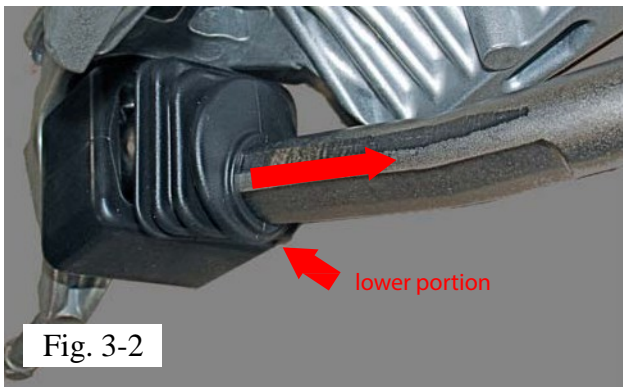


Fig. 3-2

- (b) Push/slide the bellow portion (Item 3b) of the 2 pc. rubber boot over the shift control shaft and rotate to ensure the shaft is coming out of the lower portion of the boot. (Fig. 3-2)

**Note:** Components shown in Fig. 3-2 are off vehicle for clarity purpose only.

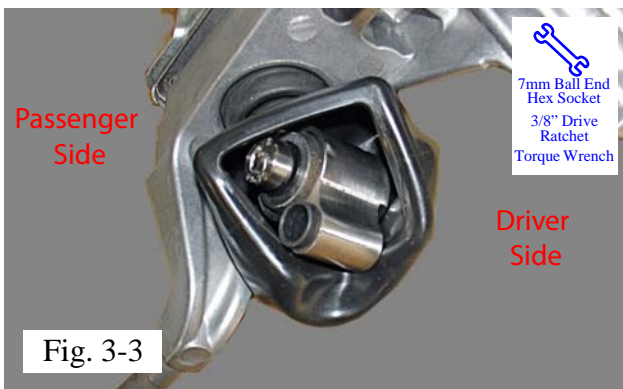


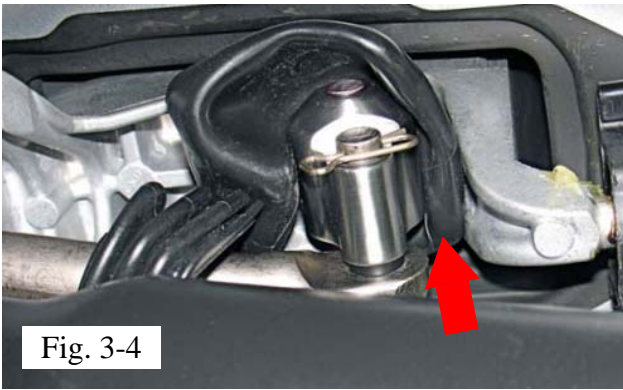
Fig. 3-3

- (c) Install the adapter (Item 1) by sliding over the lower housing bushing from the driver's side of the vehicle. Install the adapter bolt (Item 5) through the shift lever lower housing using the 7mm Ball End Hex Socket. (Fig. 3-3)

**Torque: 9.5 N·m (7 ft·lbf)**

**Note:** Verify the adapter is tight to the shift shaft lower end. There is an OE O-ring installed inside the shift lever lower end, which will provide some resistance to the adapter bolt going through. If this occurs, turn the bolt and the bolt thread will pull the bolt through the shift lever lower end. The bolt should thread into the adapter and torque down properly.

**Note:** Components shown in Fig. 3-3 are off vehicle for clarity purpose only.



(d) Push the Shift Control Shaft through the bushings in the Adapter until the retaining clip holes are visible. Re-install the retaining clip removed in step 2c. (Fig. 3-4)



(e) Seal the 2 pc. Boot Assembly together by pushing the bellows portion into the box opening. The boot is properly sealed when the entire first rib is enclosed by the box portion. (Fig. 3-5)

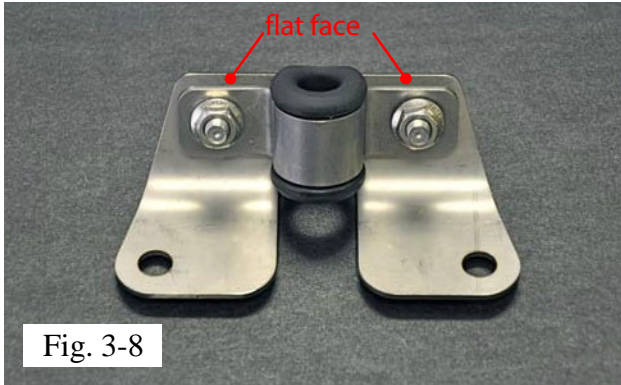
**Note:** Components shown in Fig. 3-5 are off vehicle for clarity purpose only.



(f) Remove the 2 bolts securing the Shift Tower bushing rear mount to the chassis. The Shift Tower Assembly can be tipped down slightly to allow easier removal of the bushing mount from the Shift Tower. (Fig 3-6)

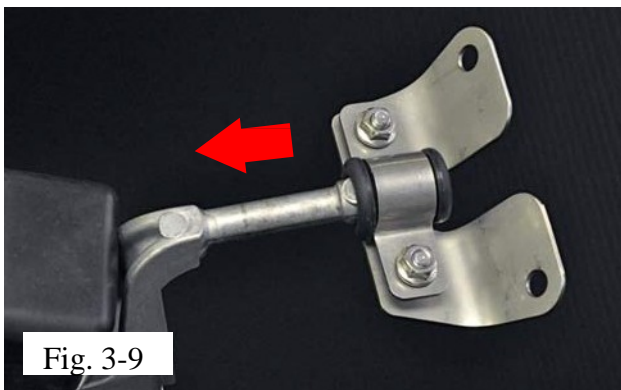


(g) Slide bushing mount rearward to remove from the Shift Tower Assembly. (Fig 3-7)



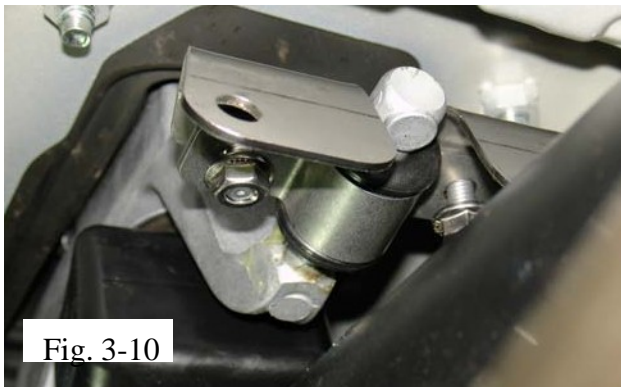
(h) Loosen, but not remove, the nuts on Rear Bracket Assembly (Item 2) to allow installation of D shape grommet in between the 2 metal brackets. (Fig. 3-8)

Note: The flat face of the grommet should lay flat against the face of the larger metal bracket.



(i) Install the Rear Mounting Bracket Assembly over the post on the Shift Tower Assembly while the bracket nuts are still loose. Use soapy water in the grommet hole to aid with installation. (Fig. 3-9/10)

Note: Components shown in Fig. 3-9 are off vehicle for clarity purpose only.



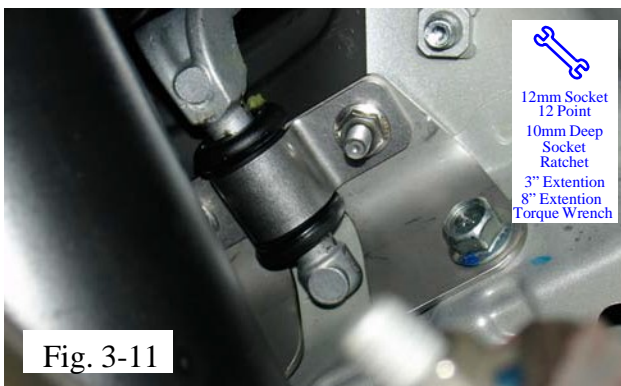
After Rear Bracket Assembly is mounted on the Shift Tower Assembly;

(1) Install Rear Bracket Assembly bolts. (12mm)  
Use 12mm Socket/12 point, Ratchet, 3" Extension, Torque Wrench. (Fig 3-11)

**Torque: 20.5 N·m (15 ft·lbf)**

(2) Tighten D shape grommet bracket nuts. (10mm)  
Use 10mm Deep Socket, Ratchet, 3" extension, 8" Extension, Torque Wrench. (Fig 3-11)

**Torque: 16.25 N·m (12 ft·lbf)**





(k) Re-install driveshaft support bearing bracket. (Fig 3-12)

**Torque: 51.5 N·m (38 ft·lbf)**



Checklist - these points **MUST** be checked to ensure a quality installation.

Check: \_\_\_\_\_

Look For: \_\_\_\_\_

Accessory Function Checks

Move through all forward and reverse gears

Sitting in the Driver's seat depress the clutch pedal and make sure all forward & reverse gears are easily engaged, and disengaged, making sure there is no contact with any dash or center console housing or hard surfaces.

Inspect 2-Piece Boot

Make sure the 2-Piece Rubber Boot is fully sealed and not separated during gear shifting movement.

Vehicle Function Checks

Start Vehicle in Neutral & In-Gear Check

Check starting status while in Neutral & In-Gear

Move through all forward and reverse gears

With the engine running and the clutch pedal fully depressed, make sure all forward & reverse gears are easily engaged and disengaged and then check that driven wheels have power. Turn off engine.

Vehicle Appearance Checks

After accessory installation and removal of protective cover(s), perform a visual inspection.

Ensure no damage (including scuffs and scratches) was caused during the installation process. (For PPO installations, refer to TMS Accessory Quality Shipping Standard.)