



MS300-18001-18 18 18018001

Member brace set brace set

Mounting Manual

This time for purchasing the TRD member brace set for 86, thank you.

In this manual it is mentioned and attention procedure for mounting, the handling of the TRD member brace set.

Please read carefully before installation, you must implement the correct mounting, handling. It should be noted, Please pass on this book is always the customer.

This product is a special order product. It is not available for return. Please handle it with care. If you have any questions, please contact the dealer or the TRD parts center.

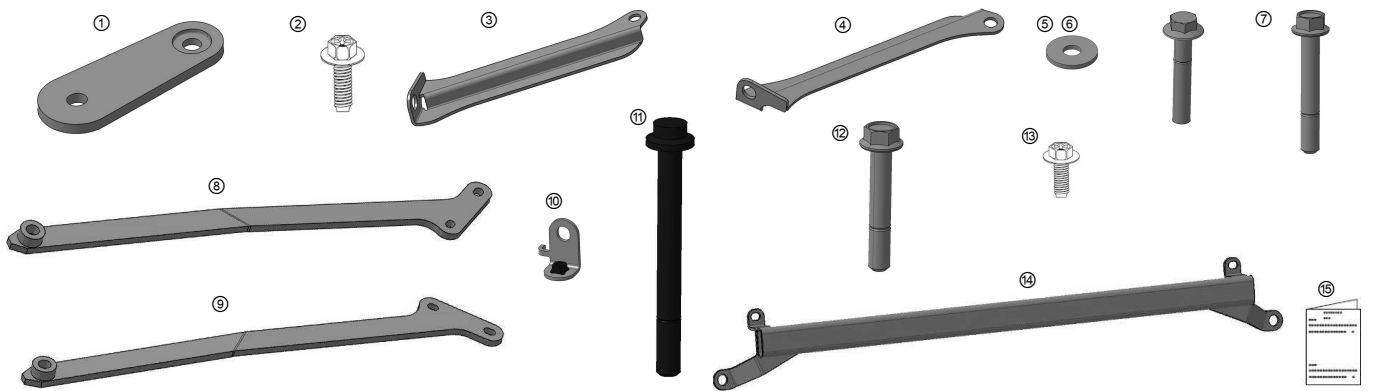
■ Part Number compatible model

Goods number	Conformance	Type formula	Model year	Remarks
MS300-18001	86	ZN6	'12 .04 ~	

- Latest adaptation information, please refer to the TRD catalog site. <Http://www.trdparts.jp/>

■ Components

Parts name	Goods number	quantity	Remarks
① FR suspension lower center brace		Two	
② flange bolts		Two	M14 × P1.5 L = 35
③ FR suspension member RH brace		One	
④ FR suspension member LH brace		One	
⑤ washer		Two	D40 d13.5 t = 2.3
⑥ flange bolts		Two	M10 × P1.25 L = 50
⑦ flange bolts		Two	M12 × P1.25 L = 85
⑧ RR suspension lower RH brace		One	
⑨ RR suspension lower LH brace		One	
⑩ RR suspension brace No1 bracket		Four	
⑪ flange bolts		Two	M14 × P1.5 L = 140
⑫ flange bolts		Two	M12 × P1.25 L = 72
⑬ flange bolts		Four	M8 × P1.25 L = 25
⑭ RR bumper No2 lean reinforcement SUB-Assy		One	
⑮ mounting and instruction manual (this document)		One	



Caution to note - the above components, replace with a new one because there is a re-disabled parts of the following.

Goods number	Product name	Individual number	Department position	Remarks
1 SU003-02871 nut		Two	The front suspension lower center brace rear side	P3 reference
2 SU003-02870 nut		Two	For the rear lower arm mounting bolt	P4 reference



トヨタ テクノクラフト株式会社

〒222-0002 横浜市港北区師岡町800 TEL (045)540-2121 FAX (045)540-2122

■ Mounting and Handling Precautions

Warning This product is not to be used for racing. If it is used for racing, it may cause serious accidents, such as death, serious injury, or fire. etc.  
 Caution This product is not to be used for racing. If it is used for racing, it may cause serious accidents, such as death, serious injury, or fire. etc.

Caution This product is not to be used for racing. If it is used for racing, it may cause serious accidents, such as death, serious injury, or fire. etc.  
 Caution This product is not to be used for racing. If it is used for racing, it may cause serious accidents, such as death, serious injury, or fire. etc.

After confirming this commodity arrival opened immediately, that there is no damage to the contents of, have all of the accessories that are described in this document

Make sure thing. This product can be attached securely to the vehicle with no history of accidents in the past.

⚠ Caution Mounting of this product, according to the repair manual for the appropriate vehicle during the exchange (Toyota Motor Corporation issue), work to protect the notes of this book

Make the.

⚠ Note This product can not be attached to an unregistered vehicle. Be sure to perform the installation after the vehicle registration.

⚠ Please be carried out by at professional maintenance shop warning installation work and parts replacement of this product.

⚠ Please do not use Warning This product is in addition to the compatible model. By breakage or malfunction, as it may lead to serious accidents.

⚠ Warning installation work, stop the engine must always flat place, after confirming that is under the parking brake, row

Please Tsu. Working in an unstable place, working with the state in which the vehicle is moving will be a significant cause of the accident.

⚠ Warning engine room, when carrying out the installation work in the vicinity, such as mufflers, enough after confirmation that the cold is sure to various parts,

Start the work. When performing the work in a hot state, you may incur serious injuries such as burns.

⚠ The portion reusing the original bolt and nut or the like attached to alert the vehicle, bolts and nuts has degraded or rust

If you have interest, be sure to replace it with a new one.

⚠ When warning mounting, please fully tighten the bolts and nuts in accordance with the specified torque. There is a loose during installation

And come loose gradually, may cause a serious accident due to falling off.

⚠ After warning attached, please check the interference between this product and the other parts. If you have interference, the dealer from which you purchased this product

Please contact us. It becomes as it is traveling and the cause of the damage or failure, as it may lead to serious accidents.

⚠ After warning attached, make sure that it is clear the minimum ground clearance 90mm.

⚠ Warning Although Yes let have sufficient strength and durability to this product, storage conditions and handling conditions, damaged by the running condition, late

There is a possibility that the failure occurs. Storage, installation work, special care is recommended before using.

⚠ Warning sudden acceleration, sudden braking, excessive traveling, such as a sharp turn, multiplied by the excessive burden for the present commodity violent operation, damage, and the cause of failure

Not only, because it will also induce the occurrence of a serious accident, please stop absolutely.

⚠ Warning This product has been designed for traveling basically paved road. Driving on rough road traveling at a sufficient safety speed

Thank you to.

⚠ Warning after this product installed, when subjected to strong shock, such as a collision, the mounting portion and the body, deformation or damage, it may cause a failure

Equipped therefore, please discontinue use immediately.

⚠ To stop immediately in a safe place if you feel any abnormality in the warning traveling, please check the mounting portion well. As it is the traveling continues

If you only, it may cause serious accidents.

⚠ Warning modifications to this product, processing, please do not take place absolutely. Guarantee not only not receive, corruption and, that serious

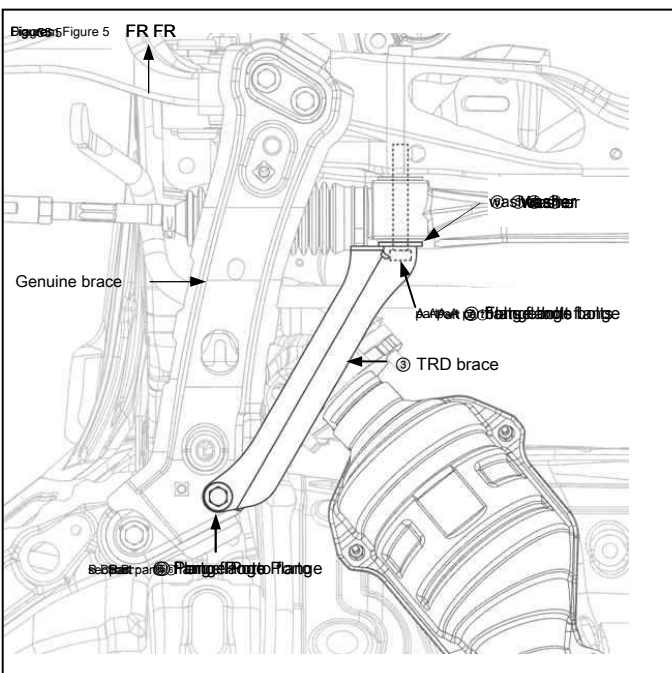
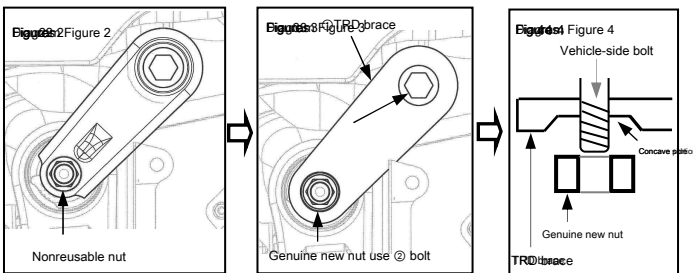
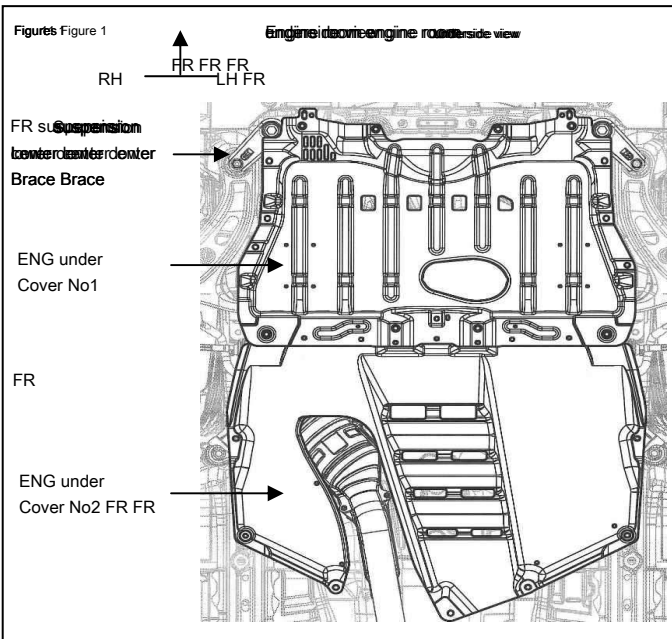
There is a case to be a cause of late.

⚠ Caution and installation work, with the traveling, it can not respond to the claim of the case where the vehicle body or this product, has been damaged.

Please be sure to observe the above-mentioned matter and this book of the mounting procedure.

⚠ Caution Vehicle work pit or Noueshiki plate (Copyright © Toyota Motor Corporation) is required for work. Please refer to the work pit or Noueshiki plate in the repair manual for the vehicle. (Copyright © Toyota Motor Corporation) is required for work. Please refer to the work pit or Noueshiki plate in the repair manual for the vehicle.

## TRD member brace submember Mounting guidelines



### 1. FR Suspension lower center suspension lower brace BRH mounting

1. repair manual for the vehicle in accordance with (Toyota Motor Corporation issue)

And engine undercover No1 from the vehicle,  
Remove the No2.

⚠ Caution  
Remove bis clip class is re-used at the time of restoration  
Please keep not to lose since.

2. genuine FR suspension lower shown in Figure 1  
Center brace is mounted as shown in FIG. 2  
Removed in the are.

⚠  
Components ②  
Use the bolts.  
Rear side of the nut because of the re-unusable goods, genuine  
Please arrange the nut exchange.  
Part number SU003-02871 Caution

3. components as shown in Figure 3 ~ 4 ① of FR Suspension  
Bolts and brand-new components ② the emissions lower brace  
Use the nut, downward the concave side as shown in FIG. 4  
Kinishi attached to the vehicle.

Bolt 120Nm · nut 110Nm

⚠ Caution  
Please refer to the repair manual for the vehicle.

### 2. FR Suspension lower suspension brace BRH mounting

1. as shown in Figure 5, of the genuine members brace the rear  
Bolt B and the steering rack mounting bolts A  
Removal, the members brace of components ③,  
Flange bolts of components ⑥ in part B, the part A  
A washer of ⑤ to the flange bolts of components ⑦  
Put temporarily attached.

2. LH side also temporarily attached in the same way

3. vehicle work pit or Noueshiki plate lift

A in the state to the ground state, the vehicle weight is applied at  
The Department · B part this tightening to install.

· A part 100Nm · B part 56Nm remove bolts does not re-use.

⚠ Caution  
1. The steering rack mounting bolts of the A part  
Left and right and disconnect at the same time when the steering rack  
Since the clock is out, be sure to work on each side.  
2. ⑤ is of washer ③ brace and steaic  
Please put between Gluck of Bush. Caution

