

NEMESIS INDUSTRIES

JK Front Shock Correction Kit

Thank you for purchasing one of our quality products. From product conception to the moment we packaged this product our focus has been on providing you with the very best. A great deal of effort is spent making sure you receive a quality part that will hold up to years of abuse. If for any reason you are unsatisfied with anything purchased from Nemesis Industries, Inc. it may be returned within 10 days in unused condition for your choice of an exchange or a full refund, less shipping charges. Thank you for your purchase and we hope to see you on the trail soon.

Pre-Install Notes:

- **Before you start it is imperative that you read these instructions. Failure to do so may result in an unsatisfactory installation or personal injury.**
- It is the purchasers / installers responsibility to inspect the package for any missing or damaged pieces prior to beginning installation. If any discrepancies are discovered please contact us immediately so we may rectify the situation.
- Carefully read the Product Warranty and Assumption of Risk Agreement at the end of this document.
- This document is also available on our website in .pdf format with images that can be enlarged for greater clarity www.nem-ind.com/tech
- Your personal safety is of the utmost importance. Please, exercise caution when working around and under your vehicle.
- Wear personal protective equipment such as safety glasses, hearing protection and gloves when working on your vehicle.

Installation Instructions



Box Contents:

**Right (Passenger) Side
Shock Correction Bracket**



**Left (Driver) Side
Shock Correction Bracket**



Hardware Pack Contents:

Part	Size	Length	Quantity
Hex Head GR 8	3/8"	1"	6
Thru Hard Flat Washer SAE	3/8"	N/A	6
Top Lock Nut Finish Grade	3/8"	N/A	6
Hex Head GR 8	7/16"	1"	2
Thru Hard Flat Washer SAE	7/16"	N/A	2
Top Lock Nut Finish Grade	7/16"	N/A	2

Tools Required:

3/8" Drive Ratchet	18mm Open-end Wrench
3/8" Drive 9/16" Socket	Drill
3/8" Drive 5/8" Socket	7/16" Drill Bit
3/8" Drive 18mm Socket	Bottle Nose Jack (Optional)
9/16" Open-end Wrench	Bungee Cord (Optional)
11/16" Open-end Wrench	



Precautions:

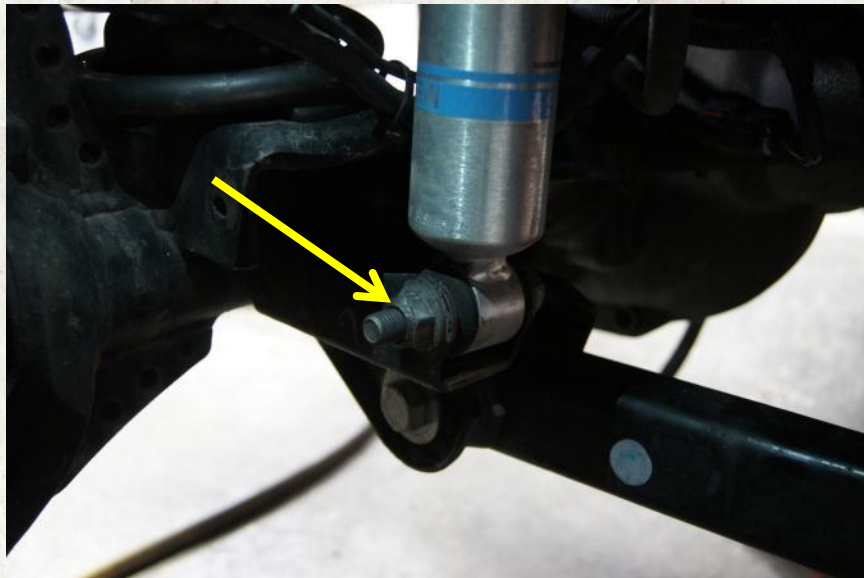
- 1. Make sure the vehicle is in park or first gear with the parking brake set. Vehicle should be on a level, sturdy surface and properly secured to prevent movement while working on it. We recommend using wheel chocks or blocks to ensure the vehicle does not move during the installation process.**
- 2. If lifting of the vehicle is required please consult the vehicle owner's manual for proper lifting techniques and jack placement. Use jack stands to support the vehicle when working under it.**
- 3. Always wear appropriate personal protective equipment: gloves, hearing, and eye protection at a minimum.**
- 4. If drilling is required eye protection is especially important to avoid injury. Also be sure to thoroughly inspect the area around where you are drilling to avoid damaging wiring or other components.**
- 5. Please follow the recommended specifications for torque on all hardware. We recommend checking the torque during regular routine maintenance on all aftermarket accessories.**
- 6. Use caution when routing electrical cables and lines. Avoid moving parts, components that become hot, and rough or sharp edges.**
- 7. Always insulate and protect all exposed wiring and electrical terminals.**
- 8. Disconnect the battery cables from both terminals with caution, and ensure that they do not touch.**



Install Procedure:

After removal of the shock and before you begin any other work be sure to position the relocation bracket under the factory shock mount and check for clearance between the brake line and the new shock location.

- a. **If there is a clearance issue you can try slightly bending the hard steel portion of the brake line out of the way being cautious not to kink or brake the line.**
 - b. **If you are unable to gain enough clearance by bending the line out of the way you can either:**
 - i. **Purchase a new brake line that routes the line closer to the caliper or**
 - ii. **Return the bracket in its unused condition for a full refund minus the cost of shipping.**
2. **Leave tires on the vehicle you will need to be able to turn the wheel from right to left to allow for easier access to the lower shock bracket during installation.**
 3. **Turn the steering wheel completely to the right to give you better access to the left side lower shock mount.**
 4. **Remove the lower shock mount bolt.**
Tools: 3/8" ratchet, 3/8" drive 18mm socket, 18mm open-end wrench
Note: Retain this bolt and nut for re-assembly.





5. Check to make sure there is no interference issues with brake line and the new shock mount.

Tip: Follow the procedure listed at the beginning of the instructions or step 5 in troubleshooting.

6. Use a bungee cord to hold the shock clear of the lower mount while you complete the rest of the steps.

Tip: This is optional it just keeps the shock clear of the working area.

7. Attach the shock correction bracket to the factory shock mount.

HDW: 1 - 7/16" x 1" GR8 hex head bolt

1 - 7/16" SAE flat washer

1 - 7/16" top lock nut

3 - 3/8" x 1" GR8 hex head bolts

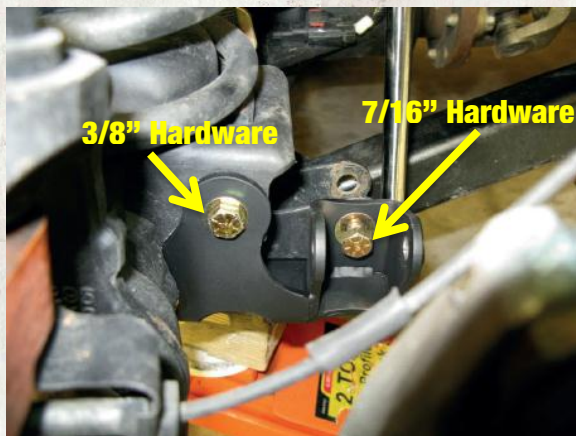
3 - 3/8" SAE flat washers

3 - 3/8" top lock nuts

Tip: All washers go on the bolt head side.

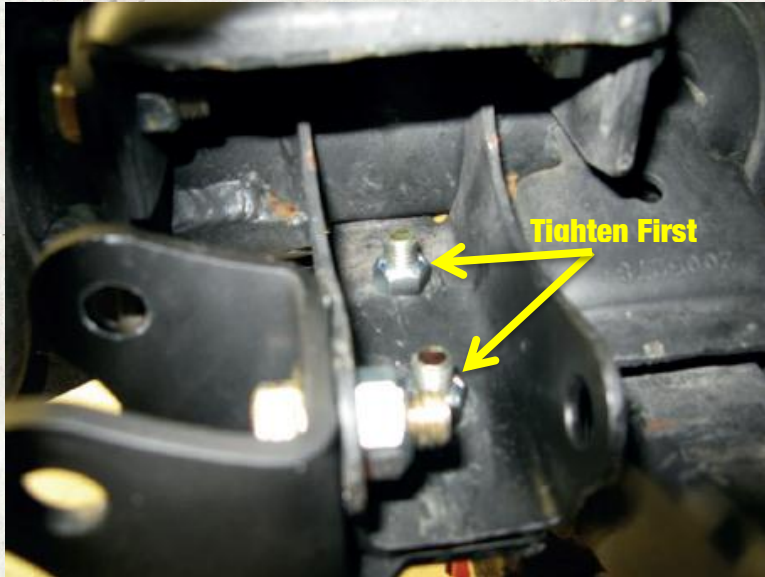
If you are having difficulties aligning the hardware you can enlarge the 3 - 3/8" holes using the 7/16" drill bit and drill.

Note: **Do not tighten hardware.**





8. Tighten the 3/8" bolts on the bottom side of the factory shock mount.
Tools: 3/8" ratchet, 3/8" drive 9/16" socket, 9/16" open-end wrench
Note: Tighten to **35 ft./lbs.** of torque.



9. Tighten the 7/16" bolt.
Tools: 3/8" ratchet, 3/8" drive 5/8" socket, 11/16" open-end wrench
Note: Tighten to **65 ft./lbs.** of torque.





- 10. Tighten the last 3/8" bolt on the side of the factory coil spring mount.**
Tools: 3/8" ratchet, 3/8" drive 9/16" socket, 9/16" open-end wrench
Note: Tighten to **35 ft./lbs.** of torque.



- 11. If you used a bungee cord to hold the shock out of the way remove it at this time.**

- 12. Install the shock to the relocation bracket using the factory hardware removed in step 3.**

Tip: You can use a bottle-nose jack to hold the shock compressed while you install the hardware.





13. Tighten the lower shock mount bolt.

Tools: 3/8" ratchet, 3/8" drive 18mm socket, 18mm open-end wrench

Note: Tighten to **80 ft./lbs.** of torque.



14. Turn the steering wheel completely to the left to give you better access to the right side lower shock mount.

15. Repeat steps 3-5 on the right (passenger) side.

16. Attach the shock relocation bracket to the factory shock mount.

HDW: 1 - 7/16" x 1" GR8 hex head bolt

1 - 7/16" SAE flat washer

1 - 7/16" top lock nut

2 - 3/8" x 1" GR8 hex head bolts

2 - 3/8" SAE flat washers

2 - 3/8" top lock nuts

Tip: All washers go on the bolt head side.

You will have to locate and drill one hole on the front side of the factory shock mount.

Note: **Do not tighten hardware.**

17. Follow steps 7-9 tightening all hardware to the required specifications.

18. Use the shock correction bracket as a drill guide and drill the final hole.

Tools: Drill, 7/16" drill bit

Note: **Use eye and hand protection to keep falling chips from burning you.**



19. Remove leftover chips from the factory shock mount.

20. Install and tighten remaining 3/8" hardware.

Tools: 3/8" ratchet, 3/8" drive 9/16" socket, 9/16" open-end wrench

HDW: 1 – 3/8" x 1" GR8 hex head bolt

1 – 3/8" SAE flat washer

1 – 3/8" top lock nut

Note: Tighten to **35 ft./lbs.** of torque.

21. Follow steps 10-12 to complete the installation.

22. Reconnect battery cables.

Thank you for your purchase. If you have any questions or comments about these instructions please contact us at:

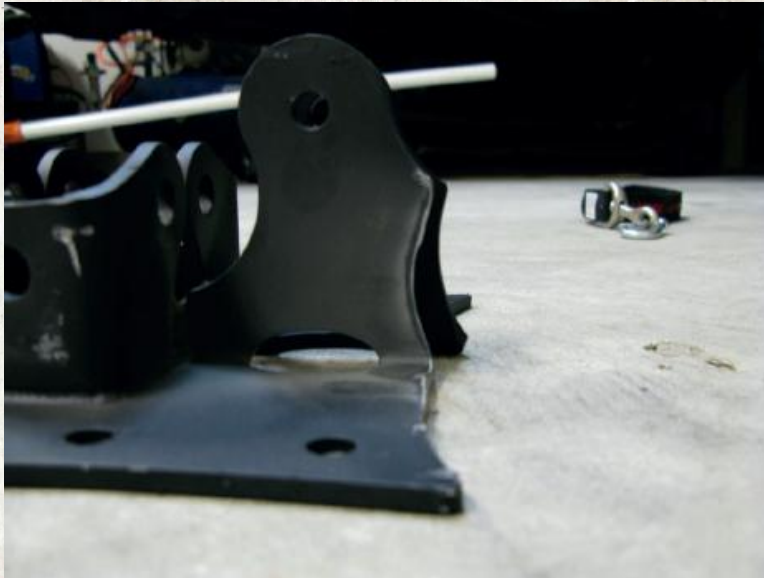
303-974-2440

info@nem-ind.com



Troubleshooting:

1. Please check our technical support page for additional resources pertaining to the install of this product.
2. If you have an external sleeve kit or gusset kit on your axle you may have to grind the correction bracket to clear.



3. You can weld the relocation bracket to the axle tube and factory shock mount for additional strength.
4. If you are not welding the bracket on it is a good idea to prime and paint the bracket before you begin the installation process.
5. After removal of the shock and before you begin any other work be sure to position the relocation bracket under the factory shock mount and check for clearance between the brake line and the new shock location.
 - a. If there is a clearance issue you can try slightly bending the hard steel portion of the brake line out of the way being cautious not to kink or brake the line.
 - b. If you are unable to gain enough clearance by bending the line out of the way you can either:
 - Purchase a new brake line that routes the line closer to the caliper or
 - Return the bracket in its unused condition for a full refund minus the cost of shipping.



Warranty:

The goal of all of us at Nemesis Industries, Inc.™ is to ensure you are delighted not only with this purchase, but also with any additional purchases and to that end Nemesis offers a ten (10) day from the ship date no questions asked return policy if products are returned in an "unused" condition, this excludes custom parts or parts with custom paint or powdercoat. In addition, Nemesis warrants your product for two (2) years from the date of sale to be free from defects in material and workmanship under normal installation and use. This warranty is limited to the costs of repair and replacement. Therefore, no type of labor or shipping allowance is available in connection with a customer's repair, removal, reinstallation or return of a damaged product. Should any questions arise, please call Nemesis at (303) 974-2440. We remind you that all finishes, painted or powder coated, must be cleaned and waxed regularly and the portion of the warranty concerning the products' finish does not apply to products that have been chipped, scratched or damaged in any way. All warranty claims are subject to inspection by Nemesis. Following such inspection, the product in question may either be repaired or replaced when found defective. Prior to any replacement or repair, written authorization as to the action to be taken shall be issued by Nemesis. Failure to contact Nemesis prior to having warranty work performed shall immediately void all applicable warranties.

THE WARRANTY EXPRESSED ABOVE IS THE SOLE WARRANTY OF NEMESIS AND ANY OTHER EXPRESSED OR IMPLIED WARRANTIES ARE HEREBY SPECIFICALLY EXCLUDED AND DISCLAIMED, INCLUDING, BUT NOT LIMITED TO, THE IMPLIED WARRANTIES OF MERCHANTABILITY AND FITNESS FOR A PARTICULAR PURPOSE. EXCEPT FOR THE LIMITED WARRANTY DESCRIBED HEREIN, NEMESIS SHALL NOT BE LIABLE TO ANYONE FOR INCIDENTAL, CONSEQUENTIAL, PUNITIVE, SPECIAL OR EXEMPLARY DAMAGES OR OTHER DIRECT OR INDIRECT DAMAGES OF ANY TYPE OR KIND ARISING FROM ANY BREACH OF WARRANTY ARISING FROM OR IN CONNECTION WITH THE PURCHASE OF NEMESIS PRODUCTS.



Assumption of Risk, Indemnity and Release:

Customer's Acknowledgments. Customer understands and acknowledges that products purchased from Nemesis Industries, Inc.TM ("Nemesis") are designed to protect against certain types of property damage from minor impacts, but are not designed as a crash safety device, or as an impact resistant product designed for the protection of occupants, but instead are cosmetic enhancements to assist in protecting against minor impact damage with certain stationary obstacles. As a result, Customer also understands and acknowledges that the installation of Nemesis products on a Vehicle and the voluntary use of that Vehicle for off-road activities (each, hereinafter, and "an Off-Road Activity") is inherently dangerous and hazardous and can result in damage to the Vehicle, to others, to the property of others and in the serious bodily injury or death to Customer or others.

Use in an Off-Road Activity. By accepting a Nemesis product and using such product in any Off-Road Activity, Customer accepts and agrees to all of the terms described below (the "Release"); provided that Customer may in lieu of accepting the terms of this Release and prior to installation, elect to return any Nemesis product and receive a full refund. Such return may be initiated by contacting a Nemesis sales representative or by directly contacting Nemesis at (303) 974-2440 or at www.nem-ind.com for the issuance of a call tag for the product in question. Once the product being returned has been received by Nemesis in good condition, a full refund will be issued minus shipping charges.

Assumption of Risk and Release. Customer assumes all risk and responsibility of engaging in an Off-Road Activity which is acknowledged as being inherently dangerous. Customer understands that persons participating in an Off-Road Activity must possess specialized knowledge and skills, and in voluntarily deciding to do so, Customer assumes all risks inherent therein which may be encountered at any time in connection with an Off-Road Activity. With full knowledge of the above and all risks inherent therein, Customer and others who may voluntarily choose to engage in an Off-Road Activity accepts full responsibility for and assumes all risks associated with engaging in an Off-Road Activity, whether known, unknown, or inherent, and acknowledge and agree that such persons are assuming all responsibility for any and all consequences resulting from the participation in an Off-Road Activity, including, but not limited to, injury and/or death to Customer or others and damage to the Vehicle and other property. Customer and each other participant in any Off-Road Activity hereby release, and forever discharge and shall hold harmless each other and Nemesis, including all of their respective predecessors, affiliates, successors, assigns, partners, venturers, principals, officers, directors, managers, shareholders, attorneys and agents and their respective insurance carriers (the "Released Parties") and hereby release and forever discharge, indemnify and hold harmless the Released Parties, and any and all persons claiming under them, however involved, of and from any and all liability for any and all claims, demands, damages and costs, liabilities, losses, expenses, obligations, compensations, reimbursements, actions, rights, loss of profits, and rights and causes of action, of every kind and nature whatsoever, including court costs and attorney fees, whether known or unknown, which Customer and any other participant may now have, or claim at any future time to have, arising from or growing out of, or by reason of, or based in whole or in part upon, any act, omission, event, transaction, matter or thing involved, alleged or referred to, whether direct or indirect, involving an Off-Road Activity.

Release of Unknown Claims. Customer and any other participant fully realize that in participating in an Off-Road Activity they may sustain unknown and unforeseen losses, costs, expenses, damages, liabilities, and claims, and the consequences thereof, which may be at this time, and hereafter unknown, unrecognized and not contemplated by them. By participating in an Off-Road Activity, Customer and any other participant intend to release the Released Parties from any and all liability for any and all such unknown and unforeseen losses, expenses, damages, costs, liabilities, and the consequences thereof, not known, recognized nor contemplated at any time by them, which result or may result from an Off-Road Activity. Customer and any other participant expressly and forever waive any right to assert that this Release was the result of a mistake of any kind, waiving all claims based upon the doctrine of mistake.



Covenant Not to Sue. Customer and any other participant specifically covenant and agree, each with the other, never to institute or participate in any suit or action, including class actions, at law or in equity, whether sounding in tort or contract, against the Released Parties and all persons claiming under them or any of them by reason of any claim, demand, action, or cause of action described in this Release.

Miscellaneous Provisions. This Release shall be binding in all respects upon, and shall inure to the benefit of the Released Parties and their heirs, successors and assigns. This Release shall be governed by the laws of the State of Colorado, and the sole and exclusive jurisdiction for the determination of any controversy or claim arising out of the purchase of any Nemesis product shall be in the District Court of Arapahoe County, Colorado. In the event that a court of competent jurisdiction enters judgment declaring any material provision of this Release invalid or unenforceable, the remainder of this Release shall remain in full force and effect and such provision shall be limited or eliminated to the minimum extent necessary so that such invalid or unenforceable provision shall otherwise remain in force or effect. Neither Customer nor any other participant shall be entitled to any favorable construction of any provision of this Release because the Release was drafted by Nemesis or by an attorney for Nemesis. The acceptance of a Nemesis product constitutes Customer's voluntary acceptance of this Release, Customer's acknowledgement that no oral statements or inducements have been made and that full and adequate consideration has been received for this Release.

Nemesis Industries, Inc.
2820 South Zuni Street Englewood,
Colorado 80110
Phone: 303-974-2440
Fax: 303-952-5212
www.nem-ind.com