



INSTALLATION GUIDE

Installation Guide for the JK Wrangler Drivelines

Part #004743200 (Front CV Drive Shaft, 3-4" Lift)

Part #004744200 (Rear CV Drive Shaft, 2 Door, 3-4" Lift)

Part #004744400 (Rear CV Drive Shaft, 4 Door, 3-4" Lift)

Special Tools required for the installation:

- 5/16 – 12 point box wrench or shallow socket. You will need a 12 point box wrench to fit the head of the bolts that hold the stock drive shaft joints to the factory yokes on both the transfer case and on the axle pinion shaft.
- 1-1/8 inch socket for the front pinion yoke.
- 1-1/4 inch socket for the transfer case yokes.
- 1-5/16 inch socket for the rear axle yoke.

Note: Be very careful to install the correct yoke. Do not mix up the front and rear axle yokes or you will damage the pinion seals and will have an oil leak.

- Front pinion yoke is Part #949200
- Rear axle pinion yoke is Part #949300
- Both transfer case yokes use Part #949100
- Before you begin the installation order Jeep part number 5143738AA (1 nut per driveshaft) if you want to install a new yoke nut with each transfer case yoke.

Driveline Angle: Point rear pinion toward transfer case **not parallel** to the output shaft.

Control Arms: Rear adjustable control arms are required to adjust the pinion angle for the Rear Driveshaft.

Tera Manufacturing, Inc.
5251 South Commerce Dr.
Murray, Utah 84107
Phone/801.288.2585
Fax/801.713.2313
www.teraflex.biz

Installation

1. Lift the Jeep and support it on jack stands or a hoist so all 4 wheels are free to rotate. This will make it easier to remove the factory bolts on the driveshaft joints.
2. Remove the factory driveshaft.
3. Remove the pinion yoke after putting a drain pan under the differential. You don't need to drain the oil, just a little will leak out when you remove the yoke.
4. Install the new pinion yoke and nut supplied by TeraFlex.
5. Remove the transfer case yoke after putting a drain pan under the transfer case. Some oil may leak out of the transfer case when you take the yoke off, but there is no need to drain the transfer case completely.
6. Install the new transfer case yoke. We recommend purchasing a new transfer case yoke nut from a Chrysler/Jeep dealer under part number 5143738AA.
7. Install the new driveshaft to the new yokes using u-bolts, split lock washers and nuts on the axle yokes. Use the 5/16 fine thread bolts and split lock washers on the CV yoke at the transfer case.
8. Check and refill oil as needed.

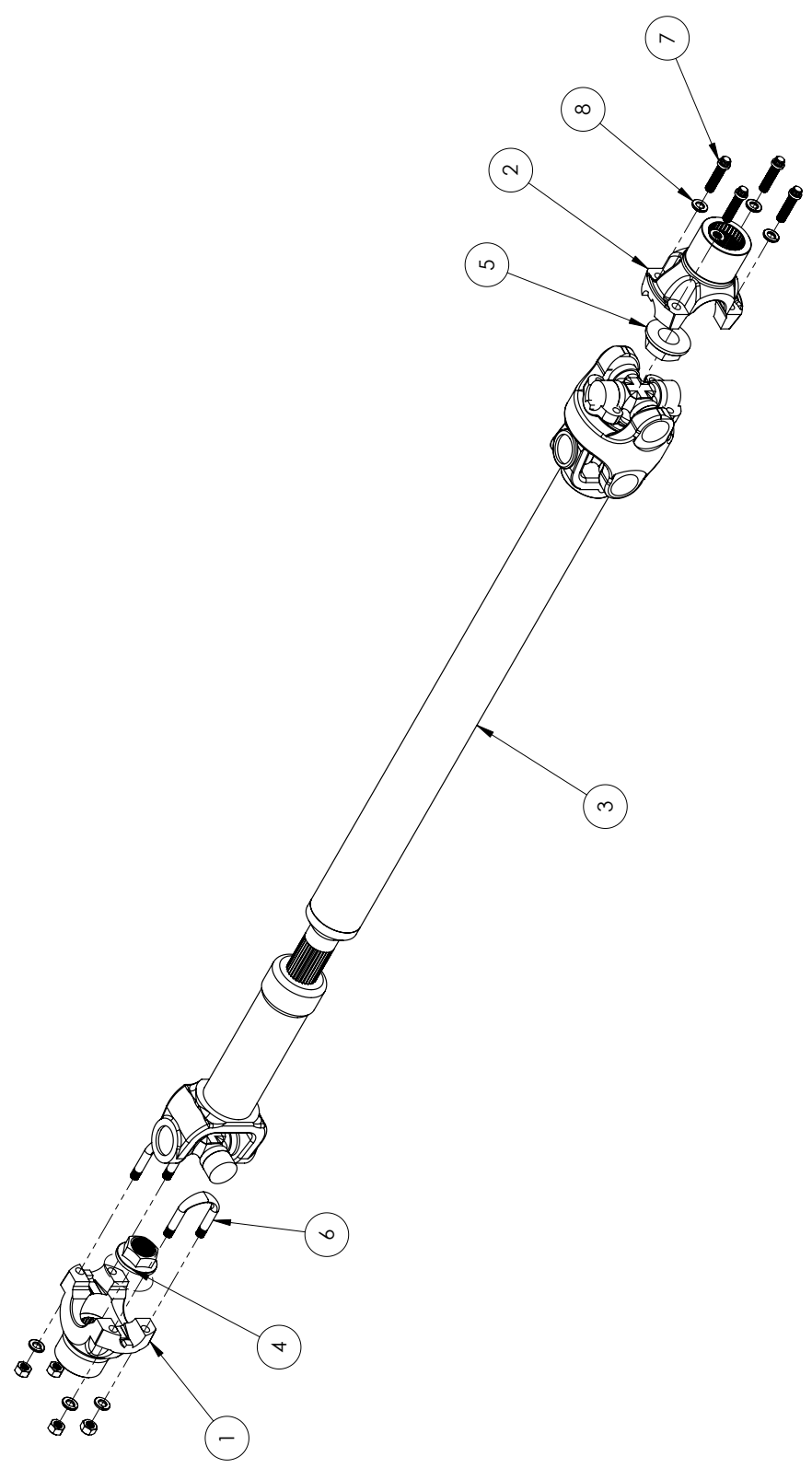
Torque Specifications:

T-Case Yoke Nut for Front and Rear Output (22mm)
Install and tighten a new yoke nut to 122-176 N·m (90-130 ft. lbs.) torque.

Front and Rear Pinion Yoke Nut (7/8"-20)
Install new nut on the pinion gear and tighten nut to 217 N·m (160 ft. lbs.).

5/16" bolts and U-bolt Nuts
17 ft. lbs. for the 5/16" bolts and the nuts on the U-bolts.

1 2 3 4 5 6 7 8



ITEM NO.	PART NUMBER	DESCRIPTION	QTY.
1	949200	JK FRONT PINION YOKE	1
2	949100	JK T-CASE OUTPUT YOKE	1
3	DSR-FJK37	37.375" LONG - JK FRONT CV SHAFT	1
4	SS112	7/8"-20 UNEF FLANGED NUT WITH DEFORMED THREAD	1
5	54000	M22 x 1.5 FLANGED NUT WITH DEFORMED THREAD	1
6	A490K	U-BOLT KIT (BOLTS, NUTS, AND WASHERS)	1
7	00093	5/16"-24 UNF X 1-1/4" LONG 12 POINT HEAD	4
8	00036	5/16 LOCK WASHER	4

UNLESS OTHERWISE SPECIFIED: DIMENSIONS ARE IN INCHES		NAME	DATE
TOLERANCES:	A. LEGAL		
FRACTIONAL: 1/32			
DECIMAL: 0.005			
TWO PLACE DECIMAL: 0.015			
THREE PLACE DECIMAL: 0.005			
ANGULAR: MACH: ±1°			
BEND: ±2°			
PROPRIETARY AND CONFIDENTIAL THE INFORMATION CONTAINED IN THIS DRAWING IS THE SOLE PROPERTY OF TERA MANUFACTURING. IT IS TO BE USED FOR THE PRODUCTION OF PARTS FOR A VEHICLE WITHOUT THE WRITTEN PERMISSION OF TERA MANUFACTURING IS PROHIBITED.		WEIGHT	kg
		HEAT TREATMENT	
		FINISH	

TERA MANUFACTURING
 2521 COMMERCE DRIVE
 MURRAY, UT 84147

00473200
 JK WITH 3-4" LIFT
 FRONT CV DRIVE SHAFT

SIZE DWG. NO. REV
B 004743200
 SCALE: 1:2 DOING SCALE SHEET 1 OF 1