

InoKinetic

4CLIFTkit

Rev. A

Page 1 of 2

Instructions

Tools/ Parts

Picture/ Illustration

READ FITTING INSTRUCTIONS IN FULL BEFORE INSTALLATION

This article is sold without warranty expressed or implied. No warranty or representation is made as to this product's ability to protect the user from injury or death. The user assumes that risk. The effectiveness, warranty and longevity of this equipment are directly related to the manner in which it is INSTALLED, USED, and/or MAINTAINED. THE USER ASSUMES THE RISK.

By purchasing this product and opening the packaging, purchasers expressly acknowledge, understand and agree that they take, select and purchase these INOKINETIC products from INOKINETIC, its affiliates, distributors, and agents (collectively INOKINETIC) as is and with all faults.

The entire risk as to the quality and performance of these INOKINETIC parts is with the purchasers. Working on your car can be a dangerous activity. If you are unsure of what you are doing, please leave mechanical or Safety critical work to a skilled mechanic.

We take no responsibility for the incorrect use and/or installation of INOKINETIC products.

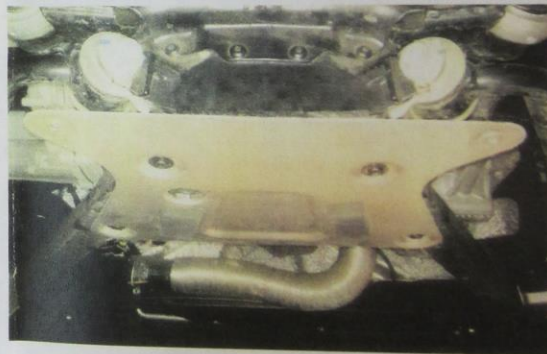
Confirm the following are in your kit:

- Thick pad
- Thin pad

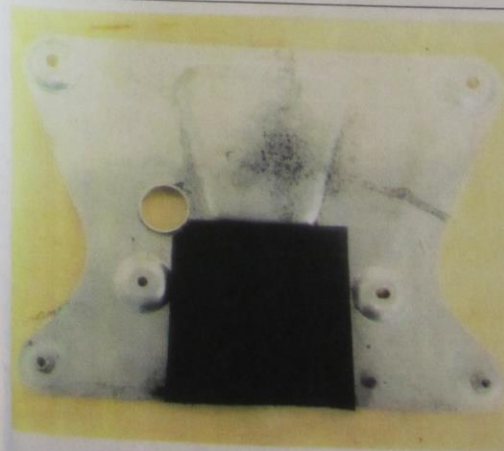
Tools needed for this install

- T-30 torx driver
- Philips head screw driver

1. Using the T-30 bit and philips head screw driver, remove the diffuser and engine under tray. This will expose a mounting plate with some threaded inserts in it. Remove the (4) torx bolts holding this plate on as well.



2. Using the double sided tape already affixed, stick the thicker pad on top of this plate so when installed, it will be sandwiched between the subframe and the plate. This will eliminate the gap that exists from the factory.



3. Stick the thinner pad to the stepped lip portion of the engine under tray. This will take up the gap between the engine tray and the panel with the threaded inserts.



4. Reinstall the panel with the threaded inserts as well as the engine tray and the diffuser.

5. You can now jack up the rear of your car using the rectangular part where the diffuser overlaps the engine tray. Normally this would result in crushing the diffuser, the under tray, and the panel with the threaded inserts. The plastic spacers now take up the gap and transfer the force directly to the subframe of the car.

