



PHATNOISE

Car Audio System User Manual



For Volkswagen and Audi Audio Systems

Table of Contents

GETTING STARTED	4
<i>FOUR STEPS TO A QUICK START</i>	5
<i>SYSTEM COMPONENTS</i>	6
<i>PhatBox Overview</i>	8
<i>DMS Cartridge Overview</i>	9
<i>USB Cradle Overview</i>	10
<i>Safety and Handling Precautions</i>	11
SECTION I: INSTALLATION GUIDE	12
<i>Before mounting the PhatBox</i>	12
Mounting Orientation	12
Mounting Clearance	12
<i>Connecting the PhatBox</i>	12
SECTION II: SETTING UP AT HOME	15
<i>Installing the PhatNoise Music Manager software</i>	15
SECTION III: CREATING AND MANAGING PLAYLISTS	19
<i>MP3 Files and ID3 Tags</i>	19
<i>Launching the Music Manager</i>	19
<i>Navigating the Program</i>	20
<i>Converting an Audio CD to computer files</i>	21
<i>Finding Music</i>	23
<i>Creating Playlists</i>	25
<i>Accessing the DMS Cartridge</i>	27
<i>Adding Music to the DMS Cartridge</i>	29
<i>Ejecting the DMS</i>	32
<i>Syncing Music</i>	33
SECTION IV: OPERATING THE PHATBOX	34
<i>Starting the PhatBox</i>	34
<i>Button Layout Overview</i>	34
<i>Using SSA</i>	36
<i>Playback Modes</i>	36
<i>Active Playback Modes</i>	37
<i>Playback Example</i>	38
<i>Other Notes</i>	39
Head Unit Display	39
Voice Prompting	40
Random Play	40
The Album Sort Order	41
Seeking	42
<i>Summary of Modes and Functions</i>	42
Track Mode	42
Playlist Mode	42
Album Browser Mode	43
Artist Browser Mode	43
Genre Browser Mode	44
Feature Mode	44
Track Info Button	45
APPENDIX A: UPDATING THE FIRMWARE IN YOUR PHATBOX	46
APPENDIX B: TROUBLESHOOTING	52
APPENDIX C: IMPORTANT SAFETY AND HANDLING INSTRUCTIONS	56
<i>FCC WARNING</i>	56
<i>Installation Precautions</i>	56
<i>Digital Media Storage Cartridge Precautions</i>	57

PhatBox Player and USB Cradle Precautions 57

APPENDIX D: USING AUDIBLE CONTENT WITH YOUR PHATNOISE CAR AUDIO SYSTEM..... 58

APPENDIX E: CONTACTING CUSTOMER SUPPORT..... 66

Copyright © 2003, PhatNoise, Inc. – All Rights Reserved. All trademarks, service marks and tradenames, including without limitation, PHATNOISE, PHATNOISE CAR AUDIO SYSTEM, PHATNOISE MUSIC MANAGER, PHATBOX, SSA/VOICE, DPGT and DMS are proprietary to PhatNoise, Inc.

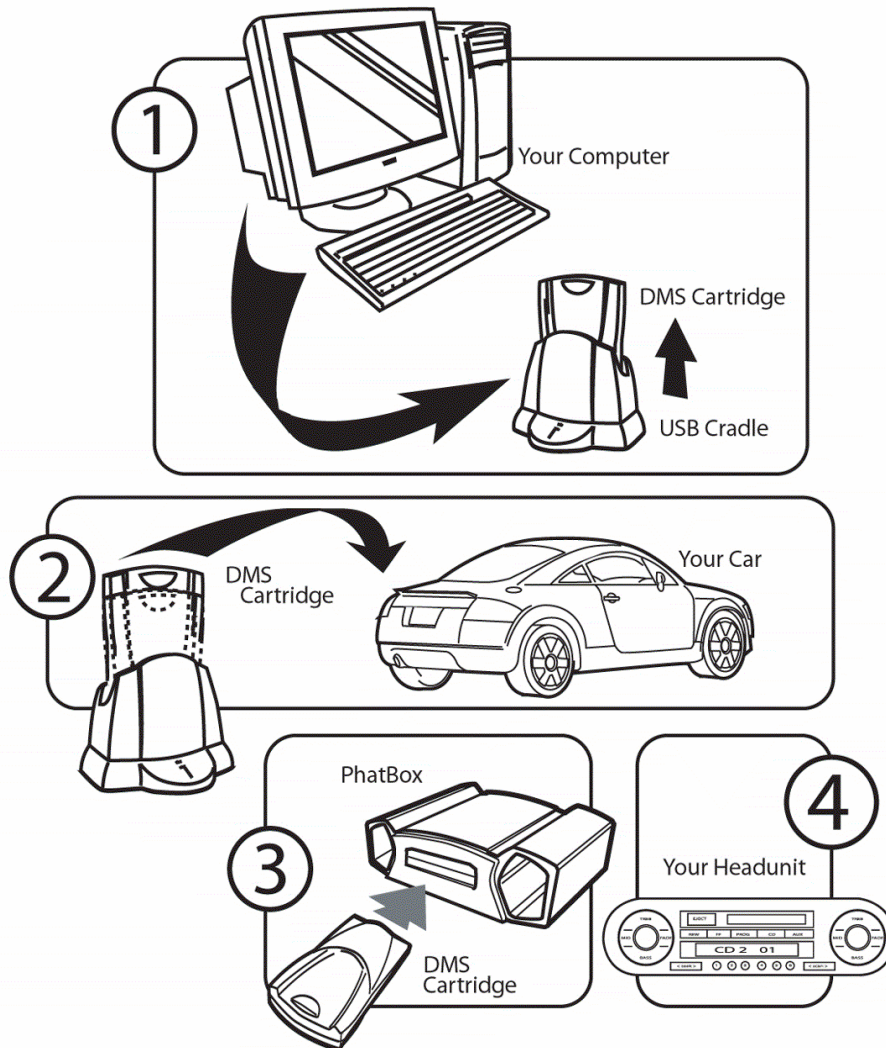


Gracenote is CDDb, Inc. d/b/a "Gracenote." CD and music-related data from Gracenote CDDb® Music Recognition ServiceSM © 2000, 2001, 2002 Gracenote. Gracenote CDDb Client Software © 2000, 2001, 2002 Gracenote. U.S. Patents Numbers #5,987,525; #6,061, 680; #6,154,773, and other patents issued or pending.

CDDb is a registered trademark of Gracenote. The logo and logotype, the Gracenote CDDb CDDb logo and logotype, and the "Powered by Gracenote CDDb" logo are registered trademarks of Gracenote. Music Recognition Service and MRS are service marks of Gracenote.

Getting Started

The PhatNoise Car Audio System is one of the most advanced automotive digital music jukebox available today. By offering one-touch access to a virtually unlimited number of MP3s, WMAs and other music files, it provides music lovers the ultimate in power and flexibility through its seamless automotive integration.



Four steps to a quick start

This manual contains step-by-step instructions for the operation of your PhatNoise Car Audio System, but as a quick overview we will start with the four major steps:

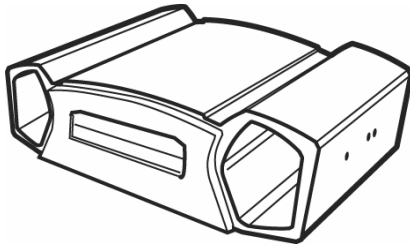
- Step 1) **Installing the PhatBox in your car.** *For more information on how to install the PhatBox in your car, see section I.*
- Step 2) **Installing the PhatNoise Music Manager software on your PC.** *For more information on how to set up your PC, see section II.*
- Step 3) **Creating playlists of your favorite music.** *For more information on creating and managing playlists, see section III.*
- Step 4) **Playing your music through your car stereo head unit by switching to the CD changer mode.** *For more information on operating your head unit, see section IV in this manual.*

System Components

Please check to make sure your PhatNoise Car Audio System package is complete. In addition to this manual, you should have received all of the following parts:

- 1 PhatBox
- 1 PhatBox connector cable
- 1 DMS cartridge
- 1 USB cradle with attached USB cable
- 1 USB cradle power adapter
- 1 PhatNoise Music Manager software CD-ROM

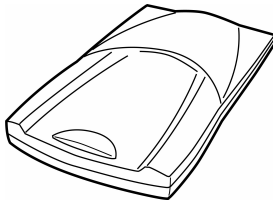
PhatBox



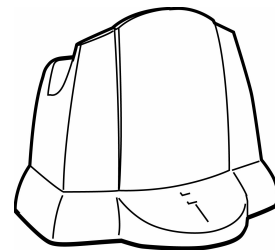
PhatBox connector cable



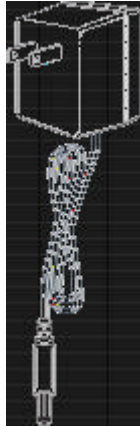
DMS Cartridge



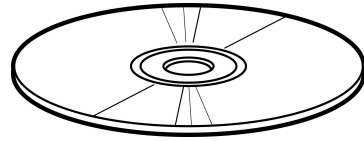
USB Cradle



USB Cradle power adapter

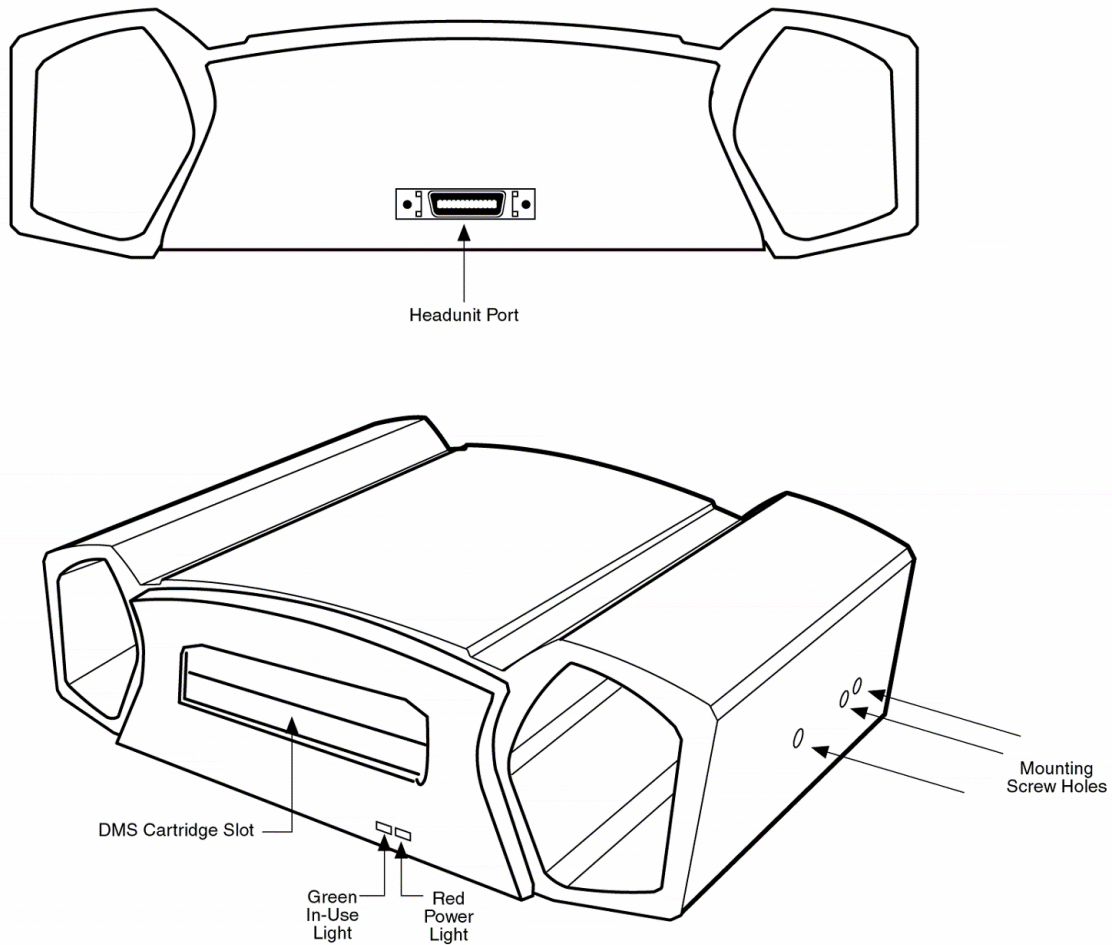


PhatNoise Music Manager
software CD-ROM



PhatBox Overview

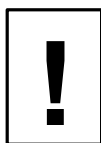
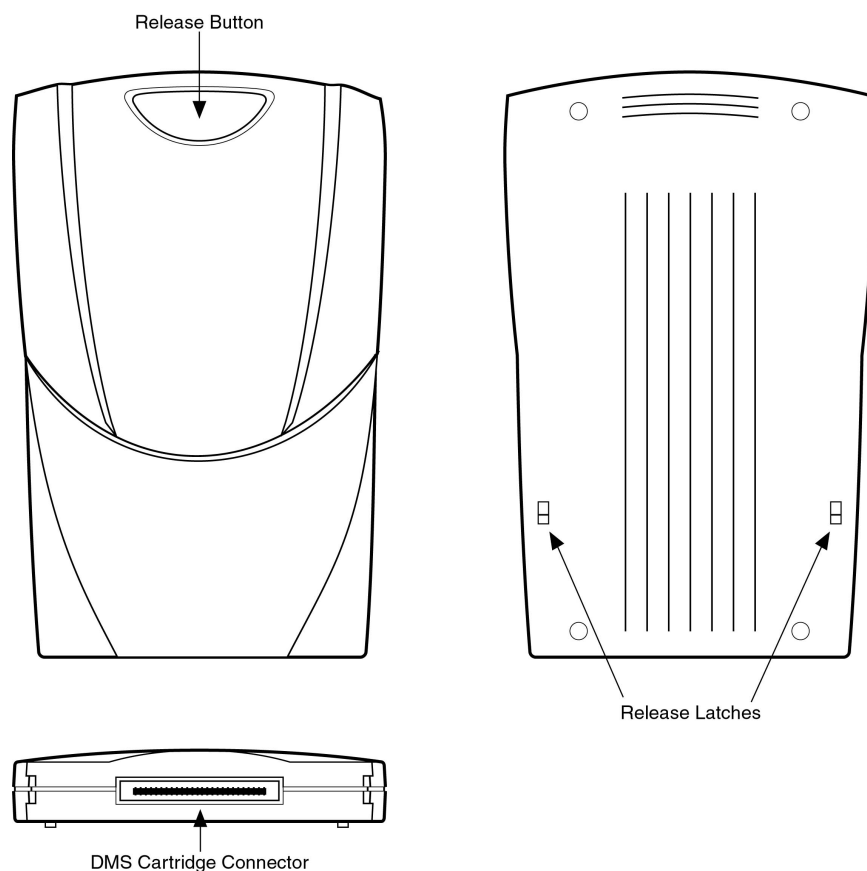
The PhatBox chassis is the “brain” of the PhatNoise Car Audio System. It is a computer that you install permanently in your vehicle. The PhatBox software and the music files themselves are contained on the cartridge that is inserted into the PhatBox.



DMS Cartridge Overview

The DMS cartridge is what makes the PhatBox flexible. Just like a computer hard drive, its huge storage capacity can accommodate thousands of music files.

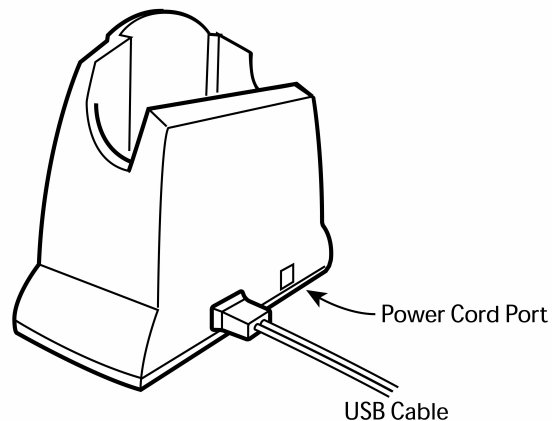
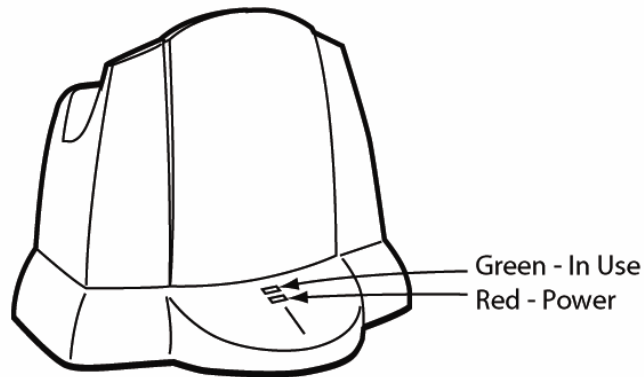
When inserting the DMS Cartridge into the PhatBox, make sure the cartridge slides all the way in until the latches click. Press the release button whenever pulling the drive out of the cradle or the PhatBox.



Do not open the DMS cartridge casing. Doing so will void your warranty. Only use genuine DMS cartridges with your PhatNoise Car Audio System — other cartridges with other drives inside will not work with your system.

USB Cradle Overview

The USB cradle plugs into the USB port in the back of your computer. Inserting the DMS cartridge into the USB cradle allows your computer to download and store music files in your DMS cartridge. This cradle is USB 2.0 compatible for fast transfer speeds. It is highly recommended that you use your USB cradle with a high-speed USB 2.0 port in order to achieve the fastest transfer rate. There are many brands of inexpensive USB 2.0 PCI adapter cards available today.



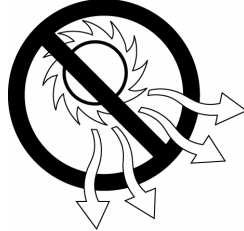
Please be careful when the DMS cartridge is in the USB cradle. If you bump or drop the USB cradle and DMS cartridge while in use, you may damage the unit.



*Important! Download and install the PhatNoise Music Manager software in your computer **before** you connect the USB cradle to your computer.*

Safety and Handling Precautions

Do not install the PhatBox on the rear deck of a car where it will be subjected to direct sunlight and high temperatures.



Do not install the PhatBox where it will be subjected to hot air from the heater or any other high-temperature location.



Do not install the PhatBox where you cannot firmly secure the unit, or in high-vibration areas.



Do not install the PhatBox in an area of high humidity or where large amounts of airborne dust/dirt are present.



Section I: Installation Guide

The PhatBox is connected to the head unit the same way a CD changer is connected. **Be sure to insert the DMS cartridge into the PhatBox before installation.**



Important note: The PhatBox should be professionally installed.

Before mounting the PhatBox

Please consider the following when mounting your PhatBox.

Mounting Orientation

The PhatBox should be mounted in the vertical, horizontal, or upside down positions. Avoid mounting the PhatBox on an angled surface for best shock performance.

Mounting Clearance

You must leave the front of the PhatBox unobstructed to allow the DMS cartridge to be removed from the DMS cartridge slot. The PhatBox cable needs at least 3 inches of clearance to keep the cables from straining or bending unnecessarily.

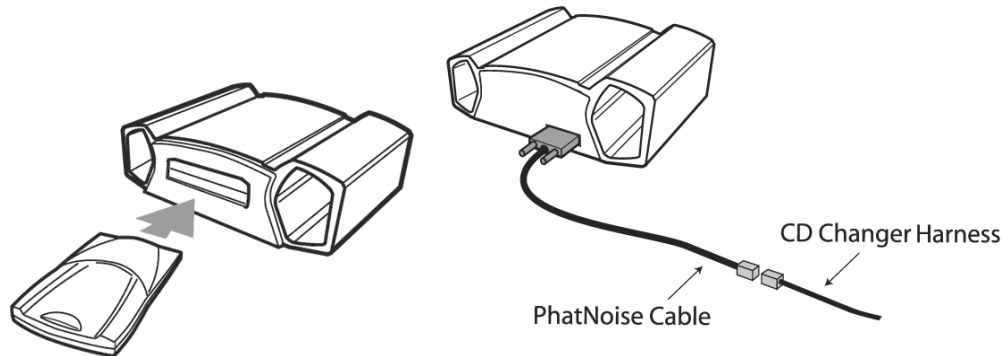
Connecting the PhatBox

A CD changer harness running from the radio to the mounting location is required for installation; this harness may already be present in the vehicle. The PhatBox is connected to the CD changer harness using the supplied PhatBox connector cable.

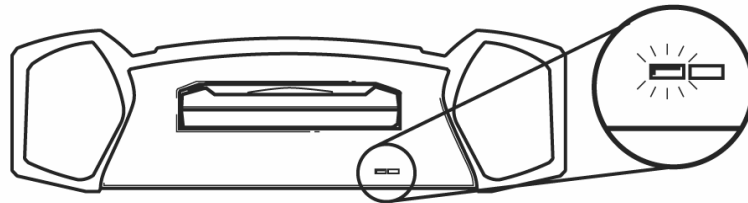
Be sure to insert the DMS cartridge into the PhatBox before installation.

1. Turn off the car and the radio.
2. Gain access to the CD Changer harness.
3. Connect the short PhatBox connector cable into the back of the PhatBox and screw in the thumbscrews. Do not attach the PhatBox connector cable to the CD changer harness yet.

- Secure the PhatBox to the mounting location.
- With the DMS cartridge fully inserted, plug the PhatNoise cable into CD changer harness.



- You should see the red and green lights turn on.



- About 5-10 seconds later, both lights should turn off and stay off.
- Turn on your car stereo.
- Switch to CD changer mode on your head unit.
- Wait for a welcome track to begin playing. You may have to wait up to 15 seconds for the PhatBox to boot.
- The PhatBox now needs to be configured to a specific Audi-Volkswagen stereo model. Turn on your radio, find your stereo model in the table below, and follow the corresponding configuration instructions.

Stereo Model	Configuration instructions
Volkswagen Premium IV stereo Volkswagen Premium IV N.B. stereo Volkswagen Premium V stereo Volkswagen Premium V N.B. stereo	<ol style="list-style-type: none"> Press 6 to go to the feature menu. Press '> ' until you get to option 5 in the feature menu. Press 'scan' at the prompt, "Select Volkswagen cassette only stereo."
Volkswagen Premium VI stereo	<ol style="list-style-type: none"> Press 6 to go to the feature menu. Press '> ' until you get to option 6 in the feature menu. Press 'scan' at the prompt, "Select Volkswagen CD and cassette stereo."

Audi Concert stereo Audi Symphony stereo	<ol style="list-style-type: none"> 1. Press 6 to go to the feature menu. 2. Press '> ' until you get to option 7 in the feature menu. 3. Press 'scan' at the prompt, "Select Audi Concert with cassette or Symphony with single CD stereo."
Audi Concert II stereo Audi Symphony II stereo	<ol style="list-style-type: none"> 1. Press 'CD+' or 'CD-' until you reach CDC6, the feature menu. 2. Press '> ' or ' <' until you get to option 8 in the feature menu. 3. Press 'scan' at the prompt, "Select Audi Concert with single CD or Symphony with in-dash CD changer stereo."

Even when the stereo is off and the key is out of the ignition, the PhatBox will remember the configuration. You will only need to configure the PhatBox again if:

- The firmware is reprogrammed.
- The PhatBox loses power, e.g. PhatNoise cable becomes unplugged, or car battery loses power.

Section II: Setting up at Home

Installing the PhatNoise Music Manager software

The PhatNoise Music Manager software is included on the CD found in your package. You can use the software to create and manage playlists of MP3s, WMA and WAV files.



You ***must*** install the PhatNoise Music Manager software on your computer ***before*** you connect the USB cradle to your computer.

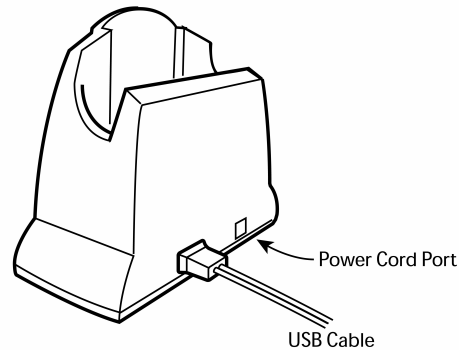
To configure the software, it is very important to follow these steps in order. **Windows 98 Second Edition and above (Windows Millenium, Windows 2000, Windows XP)** is required to use the PhatNoise Music Manager.

1. Exit all running Windows programs.
2. If the DMS Cartridge is inserted into the USB cradle, remove it now.
3. Insert the PhatNoise Music Manager software CD into your PC's CD-ROM drive. Wait a few moments. The PhatNoise Music Manager software installation program will launch automatically.
4. If the PhatNoise Music Manager software installation program does not run, follow these steps to run the software manually:
 - a. Click the "Start" button in the lower left corner of your screen and select "Run...". The Run dialog box appears.
 - b. Type the following text in the drop-down list box:

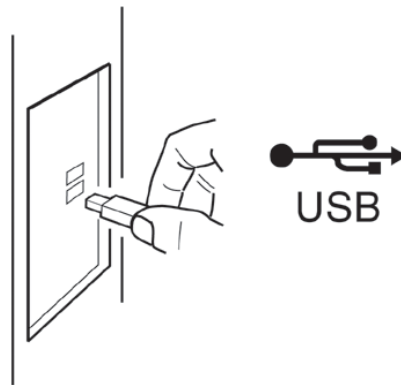
`d:\PMM_setup.exe`

where "d:" is the letter corresponding to your CD-ROM drive.
 - c. Click OK.
5. Follow the instructions to install the PhatNoise Music Manager software.

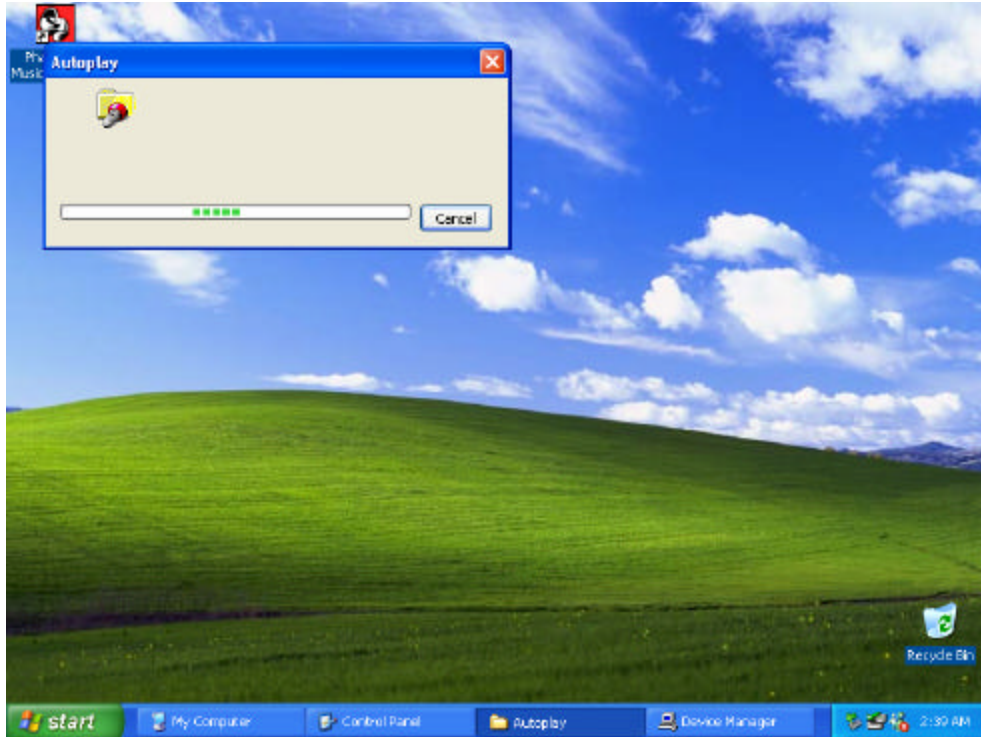
6. When the installation is finished, the setup program will ask you to reboot the computer.
7. Once rebooted, plug the power connector into the USB cradle. Make sure the other end of the power cable is plugged into a wall outlet before connecting the USB cradle to your computer.



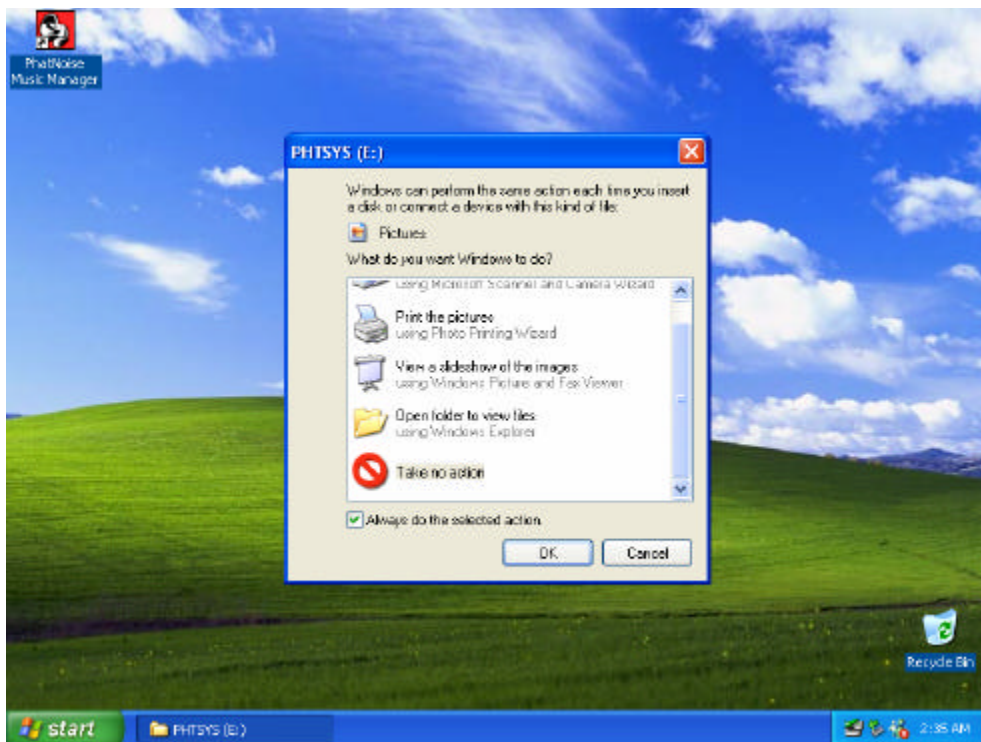
8. Connect the USB cradle to a USB port on your PC. (We recommend that if your computer does not already support USB 2.0, that you purchase a USB 2.0 PCI adapter card to take advantage of the much faster transfer speed).



9. Insert the DMS cartridge firmly into the USB cradle. Avoid 'slapping' the cartridge into place. The green and red indicator lights should illuminate. The DMS cartridge will then be detected by the operating system.
10. After an initialization period, an "Autoplay" dialog box will appear:



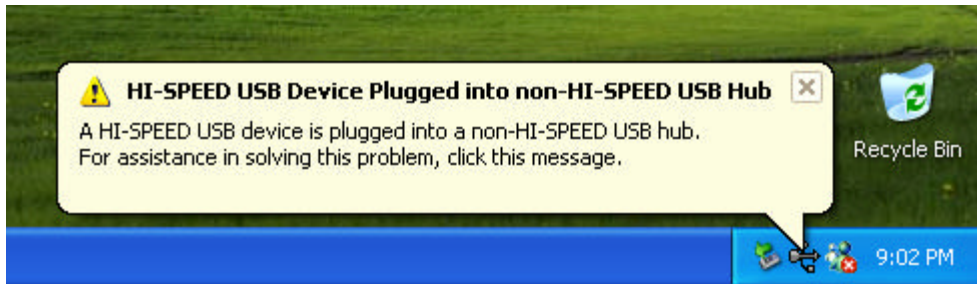
11. Let the Autoplay feature finish.
12. Next, dialog boxes will appear for PHTDTA and PHTSYS:



13. For each dialog box, select "Take No Action" and check "Always do the selected Action", then Click "OK".
14. Your DMS is ready!



If you have USB 2.0 ports installed on your machine, but the cradle is plugged into a USB 1.0 port, Windows XP will give the warning below. To solve this, plug the cradle into a USB 2.0 port.



Section III: Creating and Managing Playlists



This section of the instruction manual serves to introduce the core features of the PhatNoise Music Manager software. To explore all the features of the software, press F1 while the Music Manager is running.

MP3 Files and ID3 Tags

The PhatNoise Music Manager software allows you to organize, play, and create digital music files. These music files come in many different formats, but the most popular is the MP3 format. While this manual usually refers to MP3 files, the same actions apply to any digital music file format.

An MP3 file is a compressed audio file that can be listened to on the computer. An MP3 file is made of two parts, the audio data and the ID3 tag. The audio data uses high quality music compression to make storage and movement of music easy. The ID3 tag enables the PhatNoise Music Manager to organize music files.

The ID3 tag and music data is analogous to a book jacket and the pages inside the book. Whereas the pages contain the book's story, the book's jacket contains the author's name, the book title, and a short summary. An ID3 tag contains information about the Artist, Song Title, Album Title, and Genre, and the rest of the MP3 file is the audio content. MP3 files possessing an incorrect ID3 tag will be improperly filed, much like a book with the wrong book jacket would be misplaced in a library.

Now it's time to start using the PhatNoise Music Manager. The following sections will walk you step by step through the core features including:

1. Creating MP3 files from an Audio CD
2. Organizing music files and playlists
3. Transferring MP3s and playlists to the DMS cartridge

Launching the Music Manager

1. Launch the PhatNoise Music Manager software. You can do this one of two ways:
 - o Double-click the PhatNoise Music Manager icon on your desktop.

- Click "Start", select "Program Files", and select the PhatNoise Music Manager icon.
- 2. You will see the Music Manager splash screen, then the "Load Songs" screen will appear.
- 3. Choose a location on your computer that contains songs you wish to load into the PhatNoise Music Manager database. This may be a music folder you already have (i.e. "C:\My Music").

Navigating the Program

Each icon on the left of the application's screen represents a different interface and part of the software.



Library View



CD Encoder View



Update Device View



Web Browser View

Converting an Audio CD to computer files

The CD Encoder view allows you to create MP3 files from your CDs.

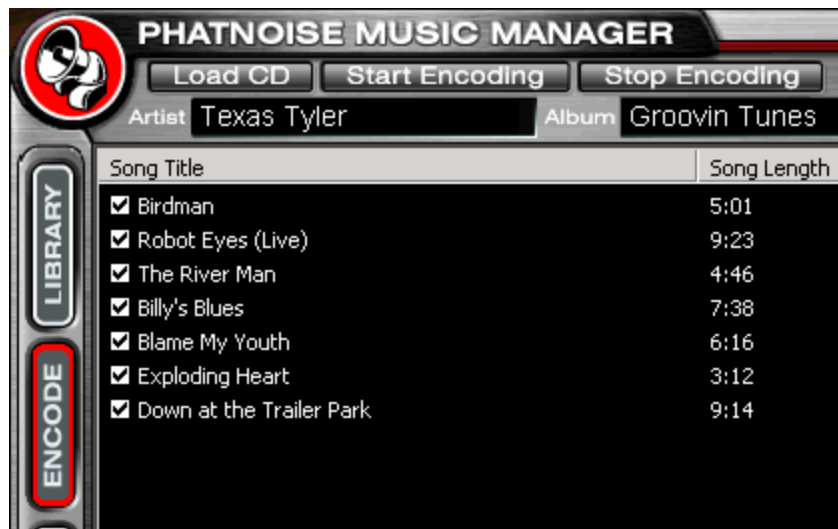
1. Switch to the CD Encoder view by pressing this button:



2. Insert the CD into the computer. Press the **Load CD** button.



3. If the computer is connected to the Internet, the songs names will appear next to the track number as follows:



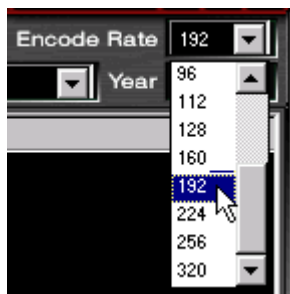
4. If you are not connected to the Internet, the tracks will be listed "Track 01", "Track 02", etc.



5. Edit the "Artist", "Title", "Genre", and "Year" information if it is missing or incorrect.
6. Choose the tracks to encode using the checkboxes.
7. Choose the file format to encode.



8. Choose the bitrate of the file to be created.



We recommend the MP3 format at 192kbps for the best combination of sound quality and file size.

9. Press the **Start Encoding** button in the Encode panel and the process will begin.



Finding Music

First, display the library of music you have loaded into the Music Manager. Click on the **Library View** button:



The Library view appears:



There are many ways of finding music with the PhatNoise Music Manager. Here are a few you may find useful:

Search Box: Type artist, album, genre, path, or filename information into the search box and view the results below.



Browse View: Click the browse view button to see a breakdown of your music library by Artist and Album. *Hint:* Right click on "All Songs" and choose "Enable Genre Browsing" to see the available Genres as well.



Media Explorer: Open the Media Explorer tree to see where your music is located. This display mirrors how your music is stored on your computer.



Creating Playlists

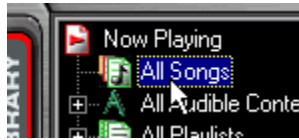
A playlist is a collection of songs. It can simply be a collection of songs you choose (*static*) or a playlist based on criteria (*dynamic*).

Adding songs to a static playlist

1. Click the **Create** playlist button. Enter a name for this playlist, choose **Empty Playlist**, then press **Ok**



2. Click on the **All Songs** playlist.



3. Find the songs you wish to include in the playlist, and then highlight the desired songs.

Concerto #2	Various Artists	Best of Classical	Classical
Sonata #1	Various Artists	Best of Classical	Classical
Sonata #2	Various Artists	Best of Classical	Classical
Prelude #1	Various Artists	Best of Classical	Classical
Prelude #2	Various Artists	Best of Classical	Classical
Love my way	Beth Jones	The Best of Beth Jones	Rock
On the corner	Beth Jones	The Best of Beth Jones	Rock
The night falls	Beth Jones	The Best of Beth Jones	Rock
You will always be	Beth Jones	The Best of Beth Jones	Rock
Nevermind	Beth Jones	The Best of Beth Jones	Rock
True to kool	Beth Jones	The Best of Beth Jones	Rock
On display	Beth Jones	The Best of Beth Jones	Rock

4. Drag the desired songs into your playlist.



Adding songs to a dynamic playlist

1. Click on the desired playlist to edit.
2. Click the **Edit** button.



3. Edit the playlist criteria via the playlist properties dialog box.
4. To add criteria to a playlist, select the criteria to add.

The criteria category selected will determine what is displayed in the criteria window. For example, if **Artist** is selected, then a list of all Artists is displayed.

If **File Path** is selected, an input box appears at the bottom of the criteria window. Simply enter the path and press **Add**.

If **Most Recent Songs** is selected, then an input box will appear at the bottom of the criteria window. Enter the number of most recent songs to add and press **Add**.

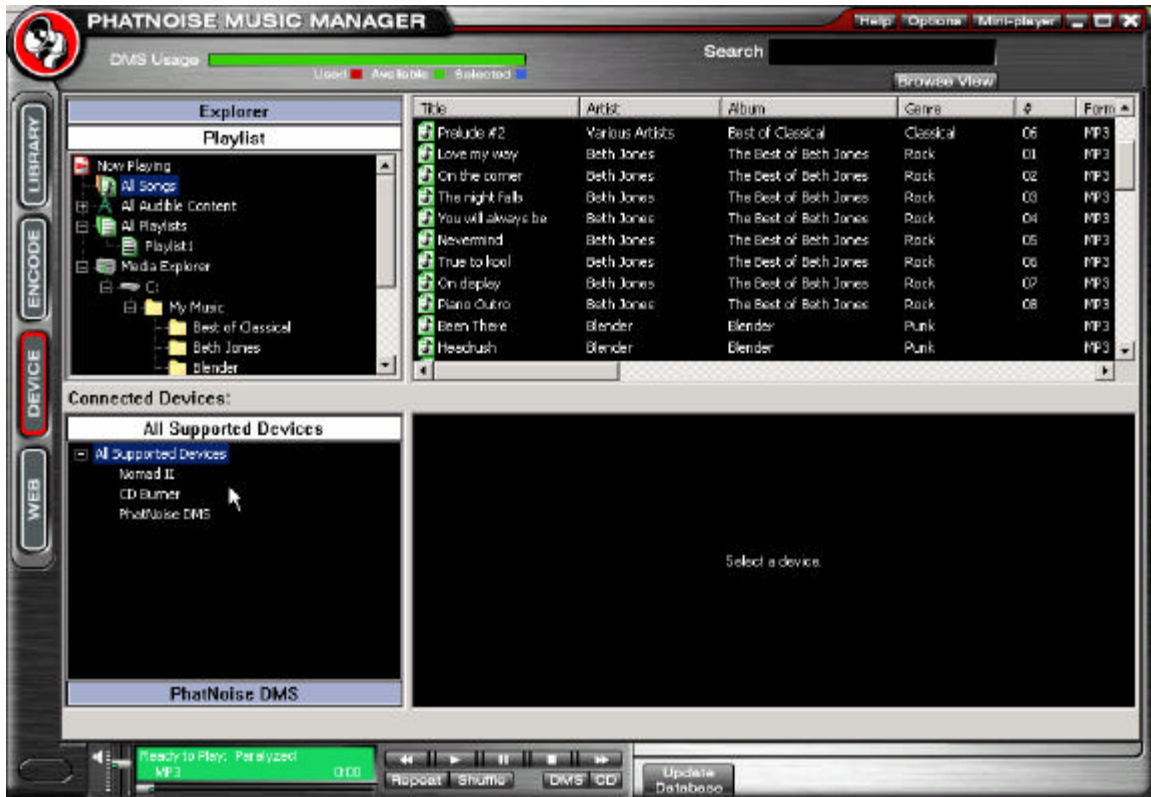
5. Each time you select a playlist in the PhatNoise Music Manager software, the list of criteria in that playlist is checked against the MP3 collection on your PC's hard drive. All songs that match the criteria are automatically added to your dynamic playlist.

Accessing the DMS Cartridge

1. Insert the DMS cartridge into the USB cradle. The LED lights on the cradle will flicker when the cartridge has been properly inserted.
2. Access the Device view by clicking the **Device** button.



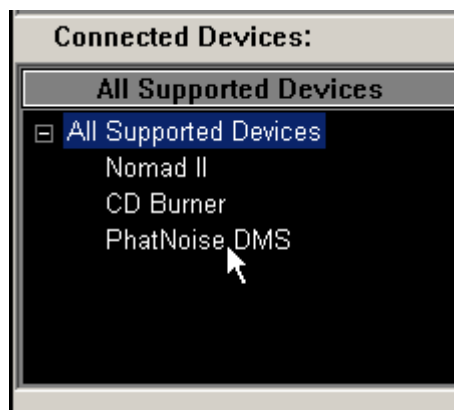
3. The Devices view appears:



The Device view is organized in two parts:

- The PhatNoise Music Manager **Playlist** and Windows **Explorer** panels
- The **All Supported Devices** panels

4. Activate the PhatNoise DMS cartridge by clicking **PhatNoise DMS** in the **All Supported Devices** panel.



When the DMS cartridge is connected properly, a summary screen appears with a red **GO** button.

If a blue **Reconnect** button appears, click on it to activate your DMS cartridge.

If the DMS cartridge has not been configured properly, a configuration wizard will launch. For more information, refer to *Appendix A: Updating the Firmware in your PhatBox*.

Adding Music to the DMS Cartridge

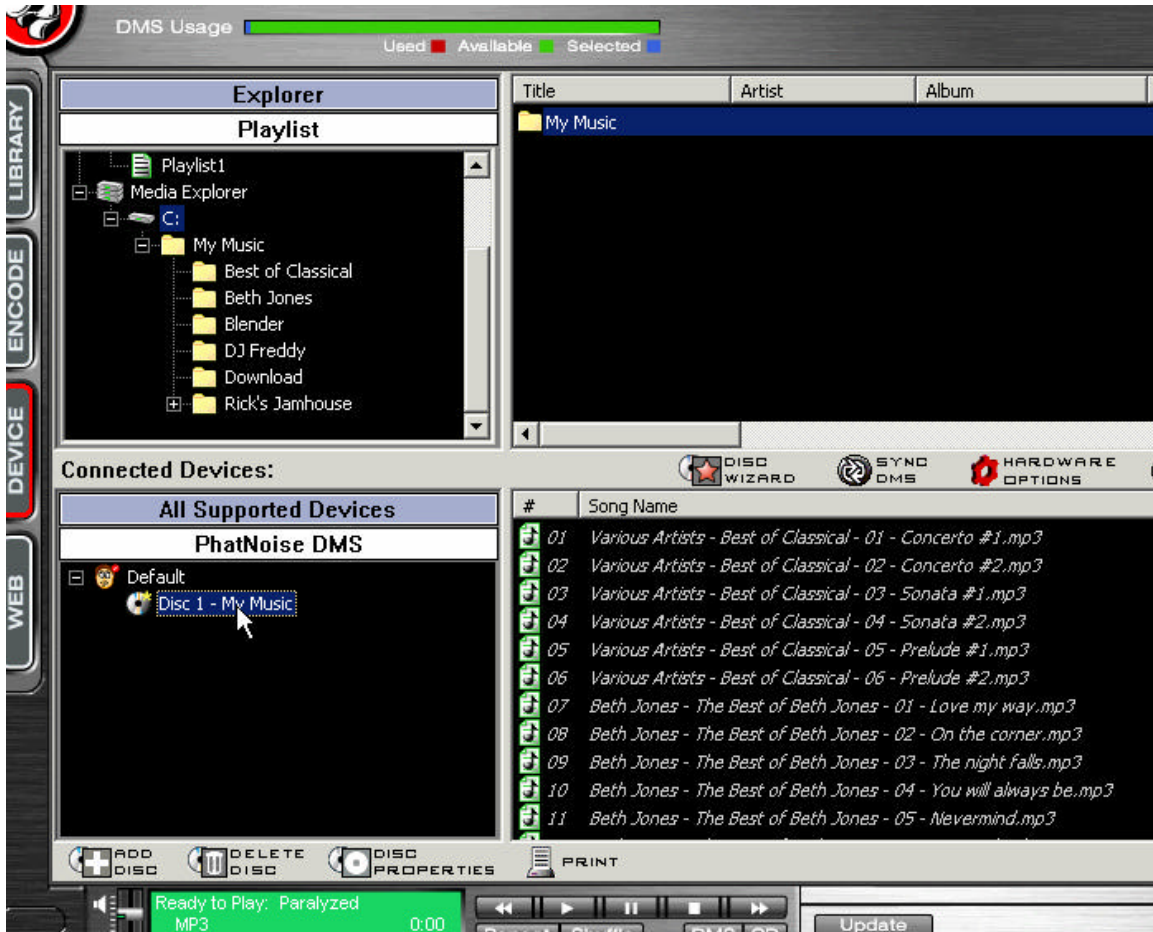
The DMS cartridge stores all music in playlists. The PhatBox can play these playlists directly, or sort all the music by Album, Artist, or Genre in the car. Here are several ways of placing content on your DMS cartridge, depending on how you like to organize your music.

CD Based: If most of your music came from CDs you encoded, follow these steps to use the PhatBox like a large CD player.

1. Find the base folder where all your encoded CDs are located using the **Media Explorer**. In this example, it is under C:\My Music:

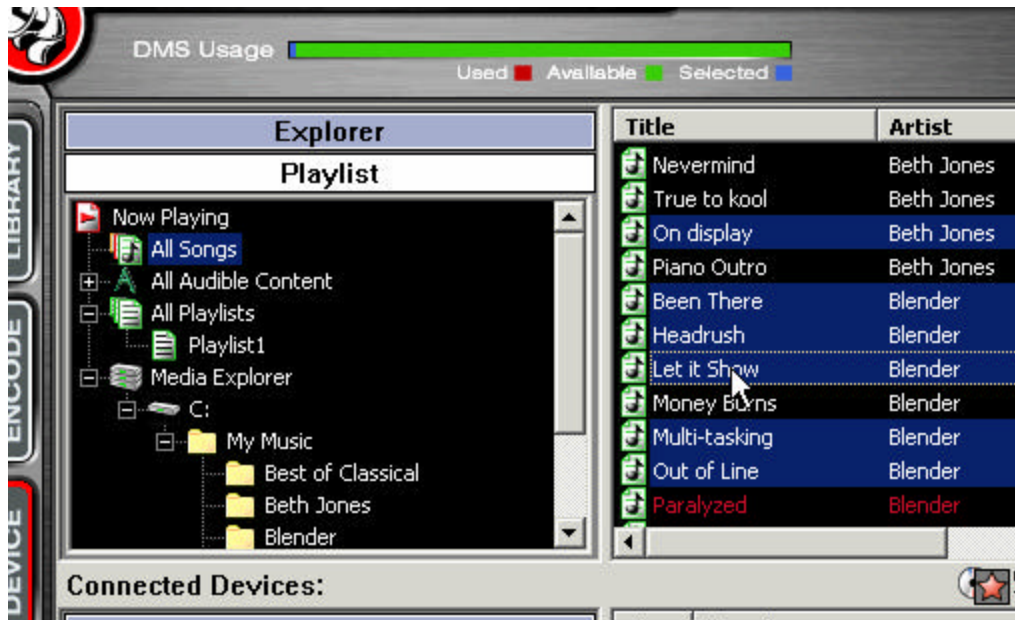


2. Drag the Folder onto the bottom left space of the window to create a "virtual" **Disc 1**. On the bottom right you can see the music contained in this Disc.



Playlist Based: To create custom mixes of music, follow these steps:

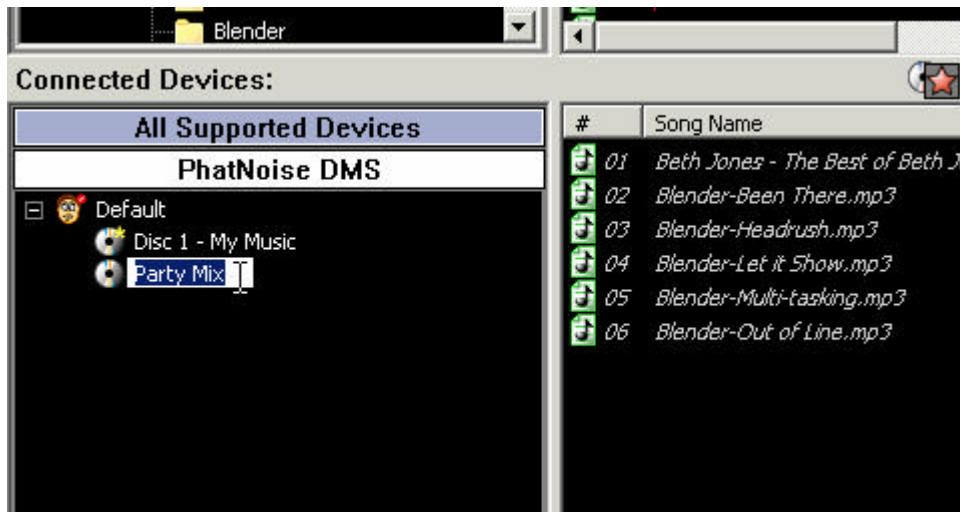
1. Select **All Songs**, then choose the songs you would like to place on the DMS.



2. Drag the selected songs onto the bottom left space of the window to create a "virtual" **Disc** of these songs.



3. Give the Disc a name by selecting the disc twice – this name will be read aloud to you in the car when you play this disc.



4. You can also directly drag a playlist you created earlier, listed under **All Playlists**, onto the DMS.

Ejecting the DMS

When you are finished modifying the contents of the DMS disc, click **Save/Eject DMS**.



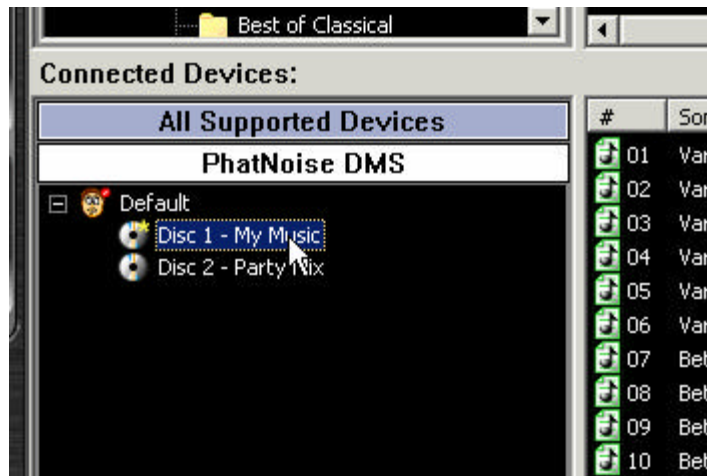
Wait until the software displays a message indicating it is safe to remove the cartridge. Removing the cartridge before this message appears will corrupt the hard drive.

The PhatBox can handle as many as 9999 separate Disc numbers, with up to 9999 songs per Disc number. The total number of songs on the DMS Cartridge must not exceed 30,000.

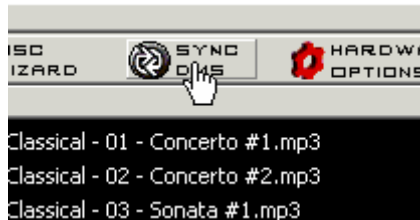
Syncing Music

The PhatNoise Music Manager has a one-click synchronization feature. This allows you to easily update the DMS cartridge with new music you may have.

In the **Device** view, a **yellow star** next to the Disc icon denotes a **dynamic playlist**. This playlist is set to find songs that match certain criteria. In the example below, the “My Music” Disc reflects all songs that are stored in the folder “My Music”:



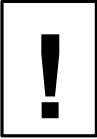
When the **Sync DMS** button is pressed all of the discs with a yellow star will be updated if new matching content is available.



If a disc has fresh content after syncing, the yellow star will turn blue and the new files will be highlighted. Be sure to click **Save/Eject DMS** to apply the changes.

Section IV: Operating the PhatBox

The PhatBox is controlled through the CD changer controls of your existing car stereo head unit.



The PhatBox operates differently than a standard CD Changer!
Please read the instructions below carefully to learn how to properly use the PhatNoise Car Audio system.

Most radios have limited control and display capabilities. These limitations caused PhatNoise to reinvent the user interface for your PhatBox. We call this new method of operation **SSA**, which stands for **Simple Stereo Architecture**. This system maximizes the functionality and ease of use of the PhatBox through voice prompting, while using the existing equipment in your car.

SSA allows the user to switch between different playback modes. These modes determine the next song that will play. The user can browse through lists of playlists, artists, albums and genres. Please read this entire section to get a better idea of how this system works.

Starting the PhatBox

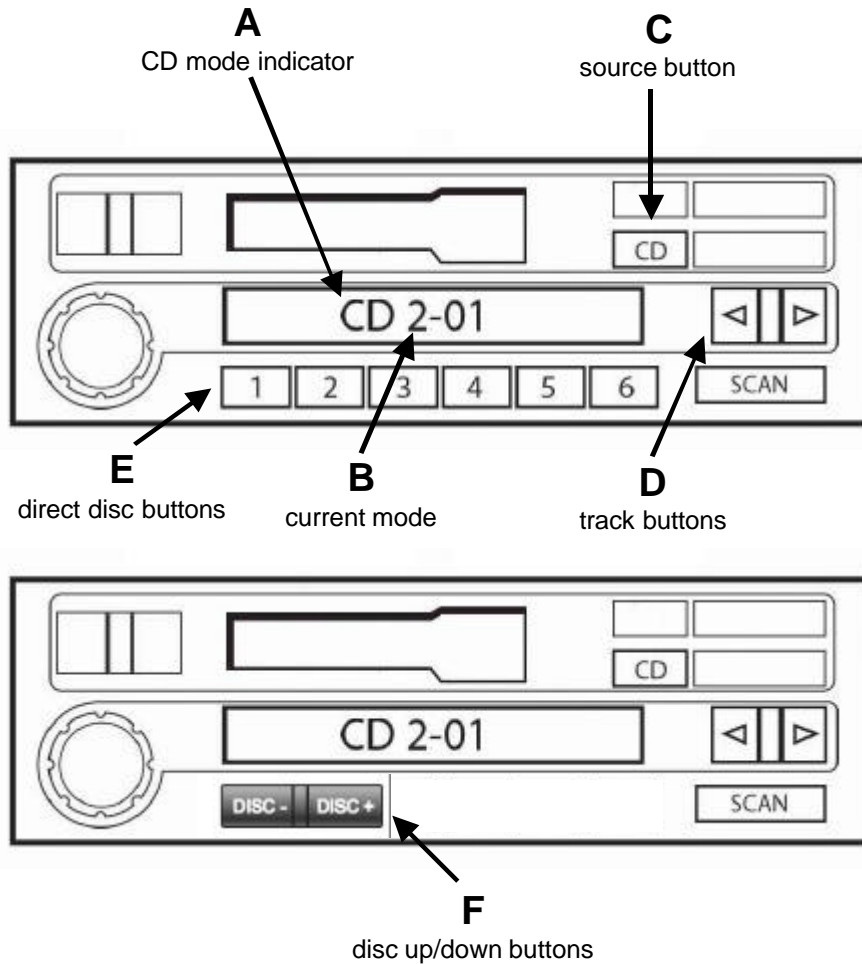
The PhatBox is available through the CD mode of your radio. The unit powers on and off automatically, and resumes where you last left playback.

To begin playback:

1. Insert the DMS cartridge into the cartridge slot of the PhatBox.
2. Turn on your radio and switch to the CD mode. This is labeled **CD** or **MODE** on your radio.
3. Playback will resume where the system last stopped.

Button Layout Overview

All radios look a bit different from each other, but these are the general features of a radio that are used with the PhatBox.



Label	Purpose
A. CD Changer Mode Indicator	Indicates that the radio is connected to the CD changer device. This means the PhatBox is currently playing.
B. Current Mode	Displays the playback mode you are currently in. Please see <i>Using SSA</i> below for more information.
C. Source Button	Pressing this button will switch into the CD Changer mode. This button may be labeled CD or MODE .
D. Track Buttons	Changes the current track or list item.
E. Direct Disc Buttons	These buttons, labeled 1-6, switches into playback modes 1-6, respectively. Your radio will have either 6 direct disc buttons, or a pair of disc up/down buttons. Please see <i>Using SSA</i> below for more information.
F. Disc Up/Down Buttons	Pressing these buttons repeatedly will cycle through playback modes 2-6. Your radio will have either a pair of disc up/down buttons or 6 direct disc buttons. Please see <i>Using SSA</i> below for more information.

Using SSA

The SSA interface mirrors the music organization performed by the PhatNoise Music Manager on your home PC. You can access the **Virtual Discs** in the order you placed them onto the DMS cartridge via the Playlist Mode, or you can have the PhatBox sort the music by Album, Artist, or Genre via the corresponding Playback Modes.

Playback Modes

Mode 1 is “Track Mode”.

In this mode, the **Track up/down buttons** move playback to the **next/previous track** determined by the **active playback mode**. The possible active playback modes are playlist, album, artist or genre. Please read the section “Active Playback Modes” (on the following page) for a more detailed explanation of active playback modes.

Mode 2 is “Playlist Mode”.

In this mode, the **Track up/down buttons** move playback to the **next/previous playlist**. After the desired playlist is chosen, wait 5 seconds and the PhatBox will re-enter Track Mode playing the first track from the chosen playlist. Entering playlist mode sets the active playback mode to Playlist Playback.

Mode 3 is “Album Mode”.

In this mode, the **Track up/down buttons** move playback to the **next/previous album**. The PhatBox will announce the name of the album, and after 5 seconds the PhatBox will re-enter Track Mode playing the first track from the chosen album. Entering album mode sets the active playback mode to Album Playback.

Mode 4 is “Artist Mode”.

In this mode, the **Track up/down buttons** move playback to the **next/previous artist**. The PhatBox will announce the name of the artist, and after 5 seconds the PhatBox will re-enter Track Mode playing the first track from the chosen artist. Entering artist mode sets the active playback mode to Artist Playback.

Mode 5 is “Genre Playback Mode”.

In this mode, the **Track up/down buttons** move playback to the **next/previous genre**. The PhatBox will announce the name of the

genre, and after 5 seconds the PhatBox will re-enter Track Mode playing the first track from the chosen genre. Entering genre mode sets the active playback mode to Genre Playback.

Mode 6 is "Features Mode".

In the Feature mode you can set special features and options of the PhatBox. The **Track up/down buttons** change the **feature to be selected**. To make a selection, press the **SCAN** or **Fast Forward** button. A voice will describe the features that can be activated.

Active Playback Modes

Every MP3 file on the PhatBox belongs to a list based on Playlist, Album, Artist, and Genre criteria.

Playback order can be switched from one list to another by changing the **active playback mode**.

The track order is determined by the active playback mode. For example, if you are listening to a **playlist** called "Favorites" in **Playlist Playback** mode, then you will hear all the songs in the playlist "Favorites". If you switch to **Artist Playback** mode, then the current song's **artist criteria** determines your location in the artist list.

Changing modes **does not change** the **CURRENT song** that is playing, it **changes** the **NEXT song** that will play. The only way that you can change the song that is currently playing is by pressing the Track up/down buttons.

With the SSA interface system, there are always 4 different possible songs that can play after the current song. The song that plays next is determined by the active playback mode.

Playback Example

Our current song playing is "Love my way" by Beth Jones. This song has the following ID3 tag information:

Playlist	Album	Artist	Genre
My Music	The Best of Beth Jones	Beth Jones	Rock

Looking at all the 4 lists on the PhatBox, you can see this particular song's location in each list from the arrows illustrated below. The **Active Playback Mode** is currently set to Playlist Playback (e.g. we are listening to our "My Music" playlist).

 Listening to Playlists	All Albums	All Artists	All Genres
All Playlists			
® My Music Party Mix	Award Time! Best of Classical Blender Digitize This Don't Know Why Mix It Up Rockin Boots Sunday Night ® The Best of Beth Jones This is Express	® Beth Jones Blender DJ Freddy Express Mail Grand Prix Mobile Army Rick's Jamhouse The Gangles Various Artists	Blues Classical Hip-Hop Punk ® Rock

Now we want to change to Genre Playback Mode; this will let us listen to other songs that have the same genre as "Love my way". If your car stereo has 6 direct disc access buttons, press button 5 to go to **Genre Mode**. If your car stereo has Disc Up/Down buttons, *repeatedly press* the Disc Up Button until the **Genre Mode** is reached (an audible voice prompt will tell you which mode you are in).

			 Listening to Genres
All Playlists	All Albums	All Artists	All Genres
® My Music Party Mix	Award Time! Best of Classical Blender Digitize This Don't Know Why Mix It Up Rockin Boots Sunday Night ® The Best of Beth Jones This is Express	® Beth Jones Blender DJ Freddy Express Mail Grand Prix Mobile Army Rick's Jamhouse The Gangles Various Artists	Blues Classical Hip-Hop Punk ® Rock

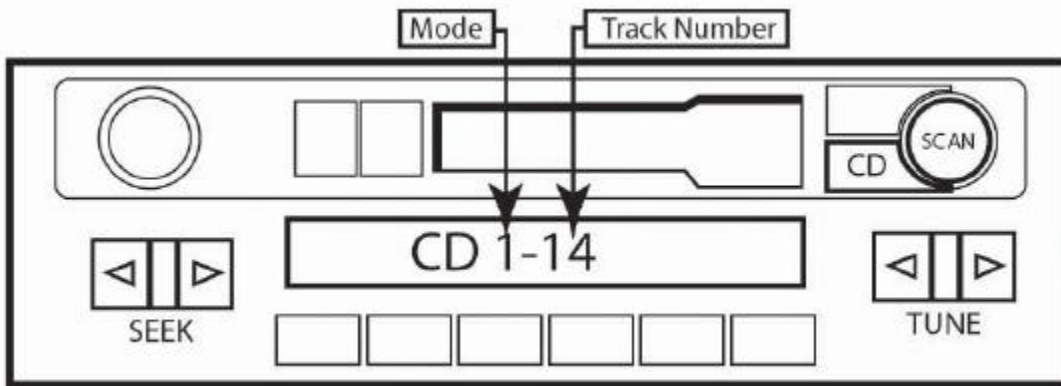
Now the next song we will hear is of the Rock genre. Since we are not changing the genre, the current song will continue until it is finished playing. If we were to change genres to Blues, then the first Blues song would begin playing.

Other Notes

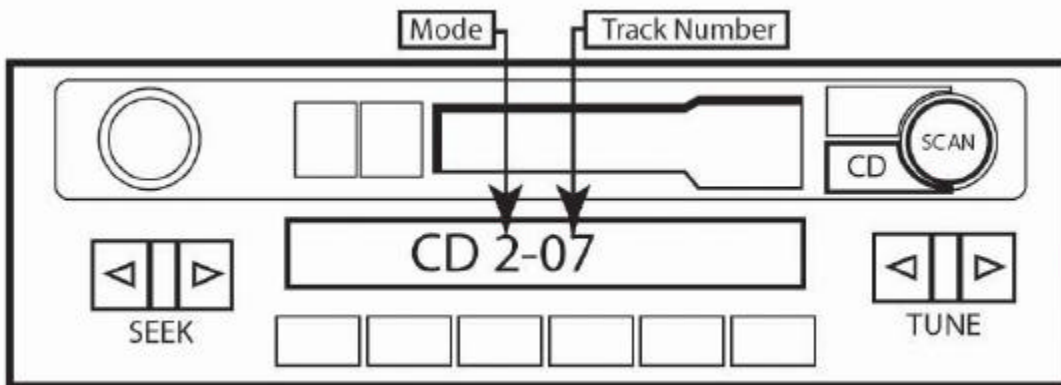
Head Unit Display

Your head unit can show only disc numbers and track numbers. The active mode is displayed as the disc number and the selection within that mode is displayed as track number.

For example, playing song 14 in Track mode (**Mode 1**) would look like this:



If you switched to Playlist Mode (**Mode 2**) and started switching playlists, the playlist number would be displayed in the track number location. For example, if you switched from playlist 6 to 7 while browsing playlists, the display would read like this:



Voice Prompting

When changing modes, the PhatBox will announce which mode it is entering. This will help you as you learn the functions of the buttons on the head unit. After using the PhatBox SSA interface for a period of time and the functions of the buttons are memorized, you can disable this voice prompting in the Features Mode. The voice that announces the album, artist and genre cannot be disabled.

Random Play

Some head units have a **Random button** (usually labeled "RDM" or "MIX"). If you press the Random button, the track order will be random within the current playback mode. For example, if the PhatBox is in Artist Mode and you are listening to all your Beth Jones

songs and you press RND, then the next song will be a random Beth Jones song.

The Album Sort Order

When in Album mode, albums are sorted first by artist name *then* by album name. For example, consider the table below. It is sorted alphabetically by album name without regard to the artist name.

Artist Name	Album Number	Album Name
Grand Prix	1	Award Time!
Various Artists	2	Best of Classical
Blender	3	Blender
Mobile Army	4	Digitize This
The Gangles	5	Don't Know Why
DJ Freddy	6	Mix It Up
Rick's Jamhouse	7	Rockin Boots
Blender	8	Straight Up
Rick's Jamhouse	9	Sunday Night
Beth Jones	10	The Best of Beth Jones
Express Mail	11	This is Express

If a user is listening to album #3 "Blender" by the artist Blender, it would be difficult to find out that the other album by the same artist -- "Straight Up" -- is also present in the database.

To alleviate this, the SSA album mode sorts by artist first, then alphabetically sorts by album name. Our example now looks like this:

Artist Name	Album Number	Album Name
Beth Jones	1	The Best of Beth Jones
Blender	2	Blender
Blender	3	Straight Up
DJ Freddy	4	Mix It Up
Express Mail	5	This is Express
Grand Prix	6	Award Time!
Mobile Army	7	Digitize This
Rick's Jamhouse	8	Rockin Boots
Rick's Jamhouse	9	Sunday Night
The Gangles	10	Don't Know Why
Various Artists	11	Best of Classical

The order represented in table above is implemented in the current software.

Seeking

The seeking operation is different from the track change operation. On some radios, seeking is performed by holding the track button down. On other radios there is a separate seek button; holding the track button down performs the same action as pressing the track button just once. To distinguish between the two actions, we use the following notation:

<	Track backwards
>	Track forwards
<<	Seek backwards
>>	Seek forwards

Summary of Modes and Functions

Track Mode

Action Button	Meaning	Display	Voice Prompt
Wait 5 seconds or press 1	Enter Track mode	The track number currently playing	None
>	Track forward	Incremented track number	None
<	Track reverse (if not at the beginning of a song, playback will return to the beginning)	Decrement track number	None
>> at the start of a song	Multiple track forward quickly	Incremented track number	None
<< at the start of a song	Multiple track reverse quickly	Decrement track number	None
>>	Time seek forward	The time in seconds	None
<<	Time seek backwards	The time in seconds	None

Playlist Mode

Action Button	Meaning	Display	Voice Prompt
Disc Up/Down or press 2	Stop playback and enter Playlist mode	The playlist number currently playing	"...the current playlist is..."
>	Go to next playlist	Incremented playlist number	Playlist name

<	Go to previous playlist	Decrement playlist number	Playlist name
>>	Advance playlist number quickly forward	The current playlist number	Playlist name
<<	Advance playlist number quickly backward	The current playlist number	Playlist name

Album Browser Mode

Action Button	Meaning	Display	Voice Prompt
Disc Up/Down or press 3	Stop playback and enter Album Browser mode	The album number currently playing	"...the current album is..."
>	Go to next album	Incremented album number	Album name
<	Go to previous album	Decrement album number	Album name
>>	Advance to the next artist	The current album number	Artist name
<<	Advance to the previous artist	The current album number	Artist name

Artist Browser Mode

Action Button	Meaning	Display	Voice Prompt
Disc Up/Down or press 4	Stop playback and enter Artist Browser mode	The artist number currently playing	"...the current artist is..."
>	Go to next artist	Incremented artist number	Artist name
<	Go to previous artist	Decrement artist number	Artist name
>>	Announce the next letter of the alphabet. When seeking is done, the first artist with the selected letter is announced.	The current artist number	Letter of the alphabet
<<	Announce the previous letter of the alphabet. When seeking is done, the first artist with the selected letter is announced.	The current artist number	Letter of the alphabet

Genre Browser Mode

Action Button	Meaning	Display	Voice Prompt
Disc Up/Down or press 5	Stop playback and enter Genre Browser mode	The genre number currently playing	"...the current genre is..."
>	Go to next genre	Incremented genre number	Genre name
<	Go to previous genre	Decrementing genre number	Genre name
>>	Announce the next letter of the alphabet. When seeking is done, the first genre with the selected letter is announced.	The current genre number	Letter of the alphabet
<<	Announce the previous letter of the alphabet. When seeking is done, the first genre with the selected letter is announced.	The current genre number	Letter of the alphabet

Feature Mode

Below is a summary of the default feature menu items. The exact list may change depending on the radio configuration.

Menu Item #	Description
1	<u>Quick Help Menu</u> Plays a short summary of how to use the SSA interface.
2	<u>Extra Help Enabled</u> Turns on selected voice messages.
3	<u>Extra Help Disabled</u> Turns off selected voice messages.
4	<u>About</u> Plays a version and release info audio file.
5	<u>Volkswagen Premium IV or V radios</u> Configures the system for these radios.
6	<u>Volkswagen Premium VI radios</u> Configures the system for these radios.
7	<u>Audi Type I radios</u> Configures the system for these radios, including Concert I and Symphony I.

8	<u>Audi Type II radios</u> Configures the system for these radios, including Concert II and Symphony II.
9	<u>Randomize all mode</u> When the random (or "MIX") button is pressed in track mode, the next song will be randomly chosen from the entire database of songs available.
10	<u>Randomize current list mode</u> When the random (or "MIX") button is pressed in track mode, the next song will be randomly chosen only from the current listing of songs (say, from an artist or album).

Track Info Button

Pressing the **SCAN** button while in Track Mode will announce the current playlist, album, artist, and genre names, if known.

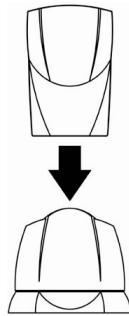
Appendix A: Updating the Firmware in your PhatBox

Your PhatBox has firmware programmed inside of it. It has already been setup at the factory to work with your car stereo head unit.

PhatNoise periodically releases updates to the firmware in order to fix problems or to provide feature upgrades. A notice of firmware updates may appear on the PhatNoise website, or you may be contacted via the email address you registered with PhatNoise when you loaded your PhatNoise Music Manager Software onto your PC.

In the event of a firmware update, follow these steps:

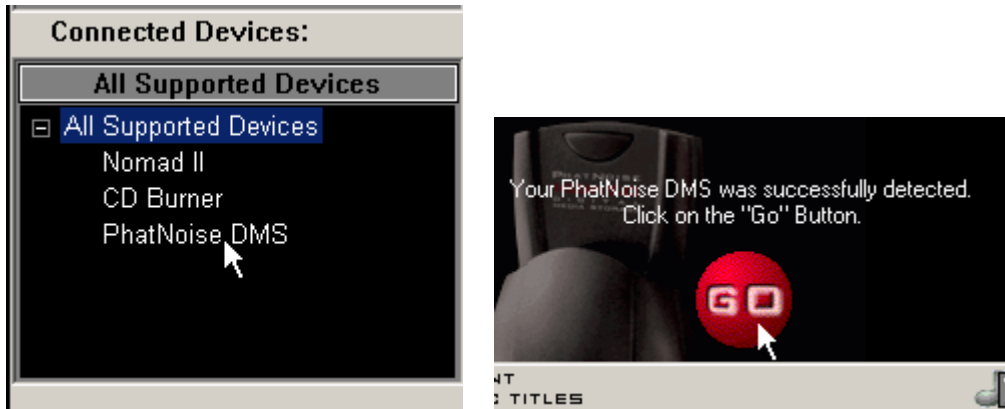
1. Insert the DMS cartridge into the USB Cradle.



2. Launch the PhatNoise Music Manager by double-clicking the icon on your desktop.
3. Press the **Device** button.



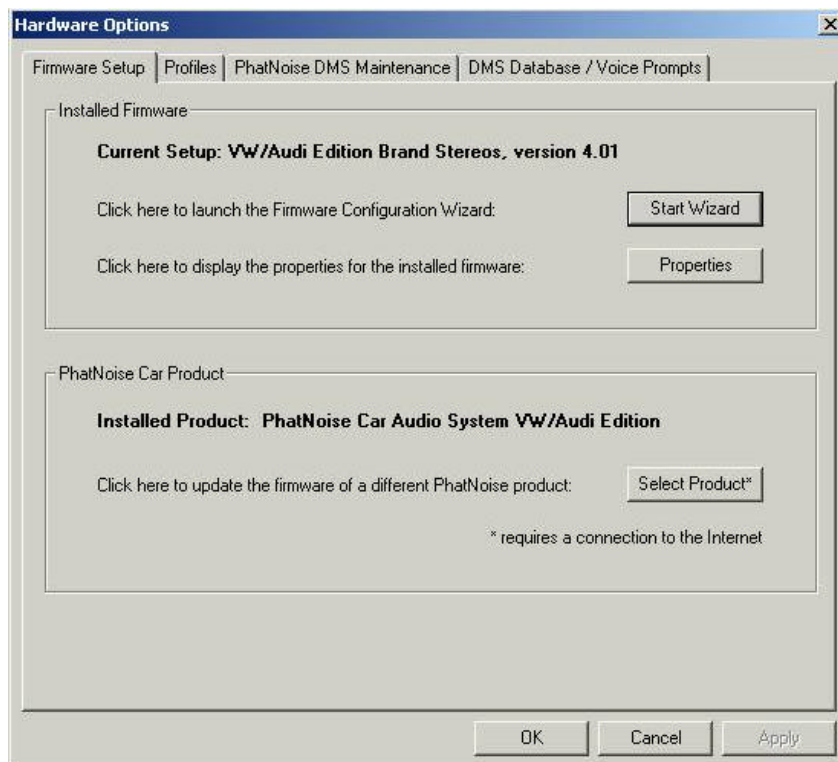
4. Click the text **PhatNoise DMS** and then press the **"GO"** button.



5. Press the **Hardware Options** button.

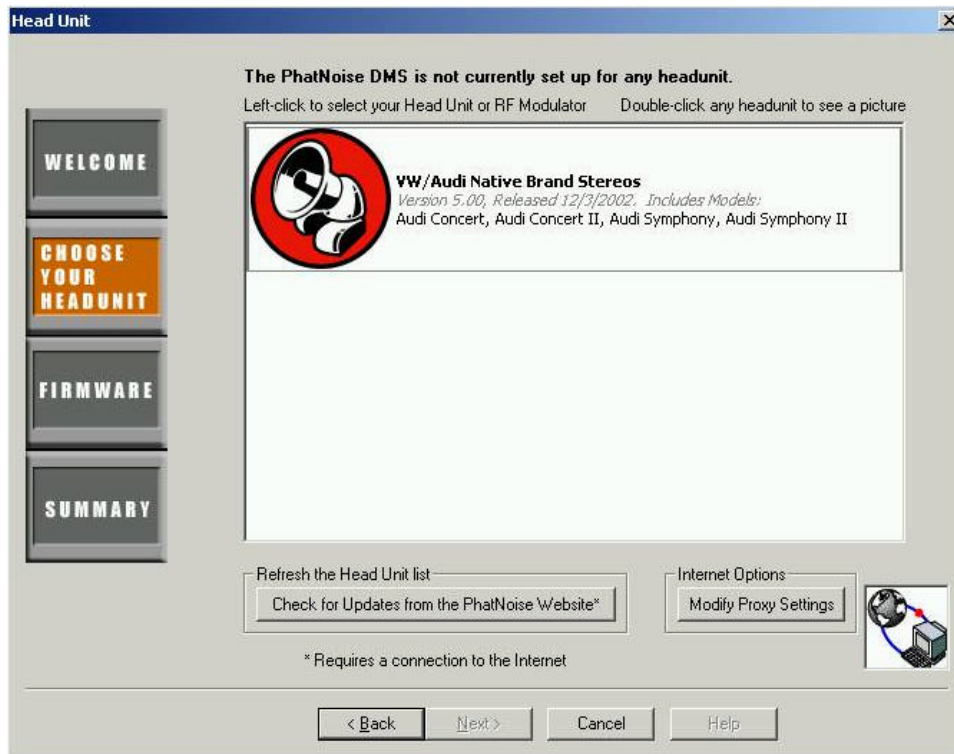


6. 'Installed Product' should be PhatNoise Car Audio System Volkswagen/Audi Edition. Press the **Start Wizard** button to begin the update process.

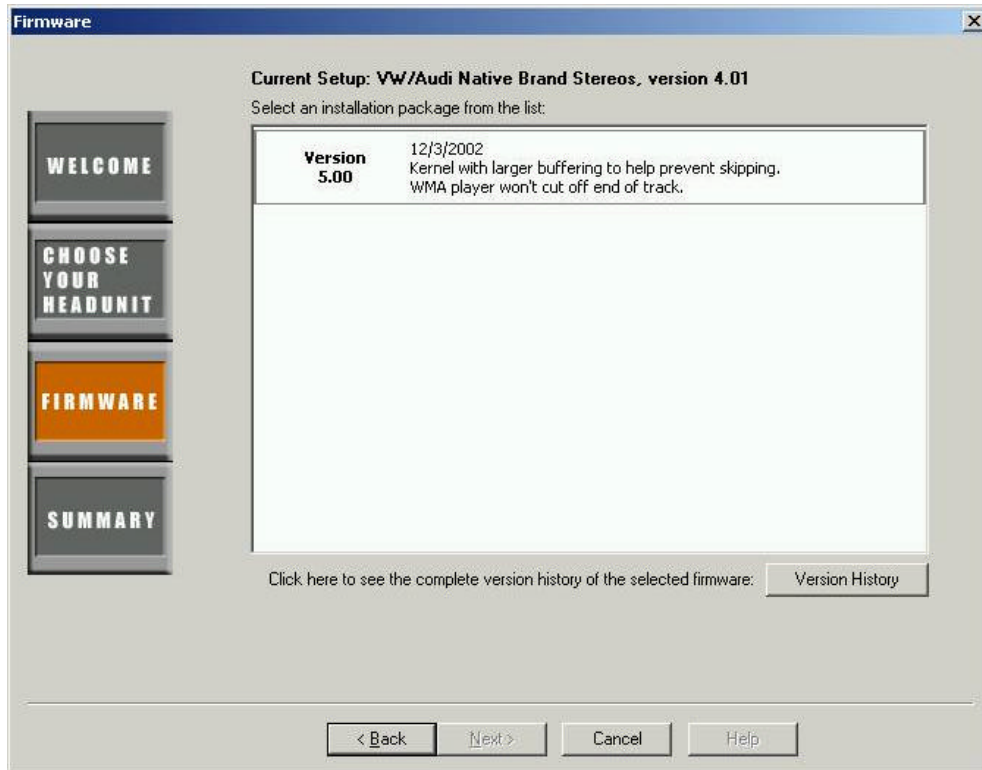


7. The wizard will begin. Press **Next** to skip the introductory screen.

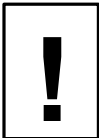
8. Press the **Check for Updates from PhatNoise Website** button to load the latest set of head unit firmware available for download. If the Version number of the firmware package is higher than the version number in your "Current Setup," it is newer firmware. Left click on the firmware package you want to download (there may be only one).



9. Press the **Next** button. The window will display information about this particular version of firmware.



10. Press the **Next** button one more time. This screen summarizes the options you have chosen. Press **Update PhatNoise DMS** when you are done, and the firmware will then be downloaded to your DMS Cartridge.



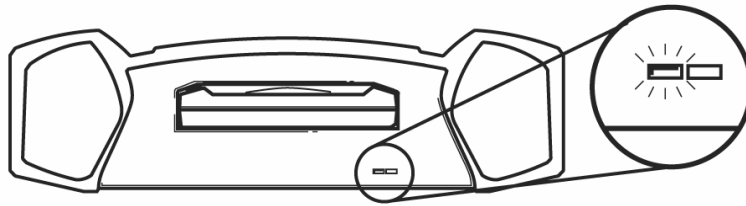
***Make sure you are choosing the correct options.
Reprogramming the PhatBox for an incorrect head unit may damage your system!***

11. The wizard will close. Now press the **Save/Eject DMS** button.

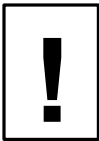


After completing these steps, your DMS cartridge is set to reprogram the PhatBox with the firmware you just downloaded. Now the PhatBox can be updated using the following steps:

12. While your car radio is off, insert the DMS cartridge into your PhatBox.
13. Turn on the radio and verify that the PhatBox powers on (the green light begins to blink).



14. While the green light is blinking, the PhatBox is reprogramming itself. This will take about 7 minutes.



Do not pull the cartridge out while the lights are blinking.

15. You may turn off the radio and lock the car – the PhatBox will turn itself off when done.
16. When the PhatBox is done reprogramming, all the PhatBox lights will turn off. Now the PhatBox is ready for normal operation.
17. The PhatBox now needs to be configured to a specific Audi-Volkswagen stereo model. Turn on your radio, find the model in the table below, and follow the corresponding configuration instructions.

Stereo Model	Configuration instructions
Volkswagen Premium IV stereo Volkswagen Premium IV N.B. stereo Volkswagen Premium V stereo Volkswagen Premium V N.B. stereo	1. Press 6 to go to the feature menu. 2. Press '> ' until you get to option 5 in the feature menu. 3. Press 'scan' at the prompt, "Select Volkswagen cassette only stereo."
Volkswagen Premium VI stereo	1. Press 6 to go to the feature menu. 2. Press '> ' until you get to option 6 in the feature menu. 3. Press 'scan' at the prompt, "Select Volkswagen

	CD and cassette stereo."
Audi Concert stereo Audi Symphony stereo	<ol style="list-style-type: none"> 1. Press 6 to go to the feature menu. 2. Press '> ' until you get to option 7 in the feature menu. 3. Press 'scan' at the prompt, "Select Audi Concert with cassette or Symphony with single CD stereo."
Audi Concert II stereo Audi Symphony II stereo	<ol style="list-style-type: none"> 1. Press 'CD+' or 'CD-' until you reach CDC6, the feature menu. 2. Press '> ' or '< ' until you get to option 8 in the feature menu. 3. Press 'scan' at the prompt, "Select Audi Concert with single CD or Symphony with in-dash CD changer stereo."

Even when the stereo is off and the key is out of the ignition, the PhatBox will remember the configuration. You will only need to configure the PhatBox again if:

- The firmware is reprogrammed.
- The PhatBox loses power, e.g. PhatNoise cable becomes unplugged, car battery loses power.

Appendix B: Troubleshooting

When Installing the PhatBox:

Problem	Cause/Solution
No lights come on at all.	<p>The PhatBox connector cable and/or head unit wiring harness is connected incorrectly. Reconnect the PhatBox connector cable and/or head unit wiring harness correctly. Make sure each connection is firmly connected.</p> <p><i>Or,</i></p> <p>The DMS cartridge is not fully inserted. Fully insert the DMS cartridge.</p> <p><i>Or,</i></p> <p>A fuse in the car has blown. After checking for short circuits in the wires, replace the fuse with one with the same rating.</p>
The green light blinks for 15 seconds, then turns off, then blinks for 15 seconds, then turns off...this cycle repeats continuously.	<p>The DMS cartridge is not fully inserted. Fully insert the DMS cartridge.</p> <p><i>Or,</i></p> <p>File(s) on your cartridge may be corrupt. Run the PhatNoise DMS Doctor on your computer and follow the recommendations.</p>
The green light blinks at a steady rate for longer than 20 seconds.	<p>You have updated the firmware on the DMS cartridge and the PhatBox is reprogramming itself. DO NOT REMOVE THE DMS CARTRIDGE. Allow the PhatBox to reprogram itself for up to 10 minutes. When reprogramming is complete, the lights will turn off and stay off.</p>

Using the PhatBox:

Problem	Cause/Solution
The radio displays NO MAGAZINE or CHK MAGAZINE.	<p>The system is still booting. Please wait up to 15 seconds for the system to boot, and switch back to CD mode.</p> <p><i>Or,</i></p> <p>The DMS cartridge is not fully inserted. Fully insert the DMS cartridge.</p> <p><i>Or,</i></p> <p>File(s) on your cartridge may be corrupt. Run the PhatNoise DMS Doctor on your computer and follow</p>

	the recommendations.
The radio displays NO CD.	No playlists were found on the DMS cartridge. Please place playlists on the DMS cartridge using the PhatNoise Music Manager. <i>Or,</i> File(s) on your cartridge may be corrupt. Run the PhatNoise DMS Doctor on your computer and follow the recommendations.

General Cases:

Problem	Cause/Solution
No Sound.	<ul style="list-style-type: none"> - Adjust the volume of the head unit. - Make sure the PhatBox cable is correctly connected to the head unit. - Make sure the head unit has the CD changer as the active source. - Make sure the navigation or telephone mute is not activated.
The head unit does not recognize the PhatBox.	<ul style="list-style-type: none"> - Make sure the PhatBox cable is correctly connected to the head unit. - Note that during firmware reprogramming (green light flashing), your head unit will NOT recognize the PhatBox – for this reason, it is often better to have the head unit off during programming.
No Sound. The head unit cannot access the PhatBox. Green light on PhatBox blinks and does not stop blinking.	<p>File(s) on your cartridge may be corrupt. Run the PhatNoise DMS Doctor on your computer and follow the recommendations.</p> <p>If you have just downloaded new firmware, this is normal. Wait about 7 minutes until the green light stops blinking, then both lights should go off.</p>
Audio skipping occurs during playback.	<p>Many things can cause a 'skip', or any break in audio playback.</p> <p>If you are hearing breaks in playback, here are some things to check:</p> <ol style="list-style-type: none"> 1. When you hear a skip, restart the track (or seek backwards a bit) to hear if the skip is actually in the music file. 2. Note that on some SSA radios, when the playback mode changes a brief mute in sound may occur. This is normal and a property of the radio. 3. Check to see if you are you using the latest firmware and desktop software. This is very important, as software is updated frequently. 4. Sometimes a heavily fragmented cartridge

	<p>can skip due to increased seek times. Defragment the cartridge for best performance.</p>
<p>WMA files are not playing in the PhatBox</p>	<p>Some software such as Windows Media Player features copy protection in their WMA encoding tools. This prevents the tracks from playing on any device other than your computer. Disable any "Copy protect music" checkbox when encoding music (consult your software's manual for more information).</p>
<p>PhatNoise Music Manager software errors containing a "Codebase" message.</p> <p>Or</p> <p>The PhatNoise Music Manager playlists are missing or not working properly.</p>	<p>The PhatNoise Music Manager database files have been corrupted.</p> <p>To fix the database:</p> <ul style="list-style-type: none"> - Close the PhatNoise Music Manager software. - Run the Database Doctor in the PhatNoise Music Manager folder on the Start Menu. <p>If this does not fix the problem, delete the folder "Data" in the PhatNoise Music Manager installation directory (usually C:\Program Files\PhatNoise Music Manager). Please note that this will erase the entire user's database and playlist files. All the songs will need to be reloaded and the playlists will need to be redefined.</p>
<p>When transferring files to the DMS a message appears "Long Filenames not supported"</p>	<p>The DMS has been mounted incorrectly, or improperly formatted. Cancel the current copy operation, eject the cartridge, close the PhatNoise Music Manager, restart the PhatNoise Music Manager, and try the operation again.</p>
<p>When a DMS cartridge is inserted into the USB cradle, neither the green nor the red light turn on.</p>	<p>The external AC/DC power adapter is not connected. Make the connection is firmly connected.</p> <p><i>Or,</i></p> <p>The DMS cartridge is not inserted all the way. Apply gentle pressure with your hand to the top of the DMS cartridge to see if this makes the lights come on. If the lights go off right away after you remove your hand, the lever switch inside the USB cradle may be out of alignment. In this case, contact the customer service listed in Appendix E.</p>
<p>USB cradle is not recognized properly.</p>	<ul style="list-style-type: none"> - Make sure the computer is running Windows 98, Windows ME, Windows 2000, or Windows XP. <p>WinNT 4.0 and Windows 95 do not have proper USB support.</p> <ul style="list-style-type: none"> - The USB interface has been disabled in the system settings or in the motherboard BIOS.
<p>Voice prompts are missing in the car</p>	<p>Check your voice prompt settings:</p> <ol style="list-style-type: none"> 1. Insert the DMS. 2. Open the Device view and select the DMS.

	<ol style="list-style-type: none">3. Press the Hardware Options button.4. Open the DMS Database/Voice Prompts tab and click Fix Voice Prompts.
--	--

Appendix C: Important Safety and Handling Instructions



FCC WARNING

This equipment may generate or use radio frequency energy. Changes or modifications to this equipment may cause harmful interference unless the modifications are expressly approved in the instruction manual. The user could use the authority to operate this equipment if an unauthorized change or modification is made.

NOTE

This equipment has been tested and found to comply with the limits for a Class B digital device, pursuant to Part 15 of the FCC Rules. These limits are designed to provide reasonable protection against harmful interference in a residential installation. This equipment may cause harmful interference to radio communications, if it is not installed and used in accordance with the instructions. However, there is no guarantee that interference will not occur in a particular installation. If this equipment does cause harmful interference to radio or television reception, which can be determined by turning the equipment off and on, the user is encouraged to try to correct the interference by one or more of the following measures:

- Reorient or relocate the receiving antenna
- Increase the separation between the equipment and the receiver
- Connect the equipment into an outlet on a circuit different from that to which the receiver is connected
- Consult the dealer or an experienced radio/TV technician for help.

PLEASE READ AND UNDERSTAND ALL INSTRUCTIONS

Installation Precautions

Mounting location precautions to ensure and observe:

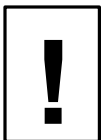
1. The unit is not subject to direct sunlight.
2. The unit is not near heat sources (such as heaters).
3. The unit is not exposed to rain or moisture.
4. The unit is not exposed to excessive dust, sand or dirt.
5. The unit is not subject to excessive vibration.
6. The fuel tank should not be damaged during installation.
7. There should be no wire harnesses or pipes under the place where you are going to install the unit.
8. The spare tire, tools or other equipment in or under the trunk should not be interfered with or damaged.
9. Make holes only after making sure there is nothing on the other side of the mounting surface.

Digital Media Storage Cartridge Precautions

1. **Do not remove the DMS Cartridge from the PhatBox Player unless the PhatBox Player is turned off.**
2. **Do not remove the DMS Cartridge from the USB Cradle until downloading is complete.**
3. Do not leave the DMS Cartridge in locations with high temperatures and high humidity, such as on a car dashboard or in the rear window where it will be subject to direct sunlight. Do not subject the DMS Cartridge to extreme cold temperatures.
4. Do not place more than one DMS Cartridge at a time into the PhatBox player.
5. Do not drop the DMS Cartridge or subject it to a violent shock.
6. Do not spill liquid on the DMS Cartridge or submerge the DMS Cartridge in liquid.
7. The only effective protection for data and other material stored on the DMS Cartridge is the regular backing up of that data by you, the consumer. PhatNoise Inc. shall not be responsible for the loss of any such data or other material.

PhatBox Player and USB Cradle Precautions

1. Never spill liquid of any kind on the PhatBox Player.
2. Do not place the PhatBox player on an unstable cart, stand or table. The product may fall, causing serious damage to the product.
3. Do not use any object to probe the opening of the product and do not put any body parts or other foreign objects in the opening of the product- this may result in bodily injury and can also damage the product.
4. Avoid severe impact. Do not drop the PhatBox player on a solid surface or drop a heavy object on the PhatBox player.
5. Take care when plugging and unplugging cables.
6. Do not hold the PhatBox or the USB Cradle by the cables alone
7. Do not remove the DMS Cartridge from the USB Cradle when the green activity light is on.



Do not attempt to service any part of the product yourself. Servicing should only be done by qualified service personnel.

Appendix D: Using Audible content with your PhatNoise Car Audio System

Introduction

Audible is a huge collection of audio programming delivered digitally over the Internet, anywhere, anytime. At audible.com, you can choose from over 4,500 audiobooks and 14,000 other audio programs. You can download those programs to your computer and listen immediately, or you can transfer them to your PhatBox and listen on the go.

Getting Started with Audible

This guide is a brief introduction to using the PhatNoise Music Manager with Audible content. For a thorough explanation of the Audible service visit Audible's website at www.audible.com, and view the PhatNoise Music Manager Help File by pressing F1 while the program is running.

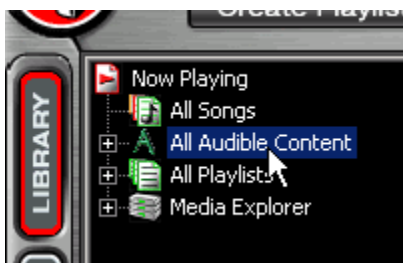
Creating a new Audible.com account

To get started, please perform the following steps:

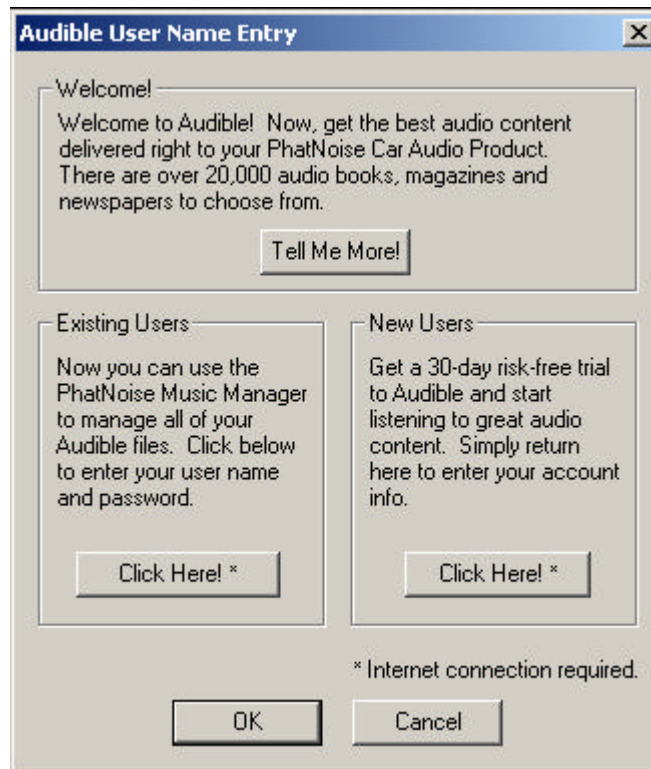
1. Go to the Library View by clicking the **Library Button**.



2. Click "**All Audible Content**".



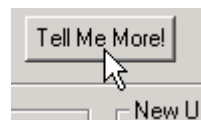
3. When you click the "**All Audible Content**" link for the first time you will be presented with the following dialog box:



The Audible User Name Entry dialog box gives you the following three options:

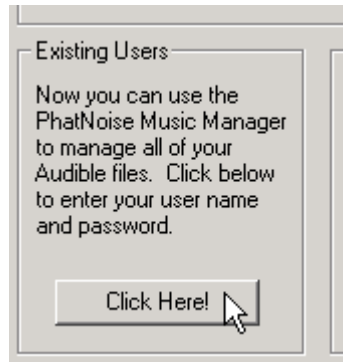
Welcome - Tell Me More!

Click the **Tell Me More!** Button to get more information about audible.com

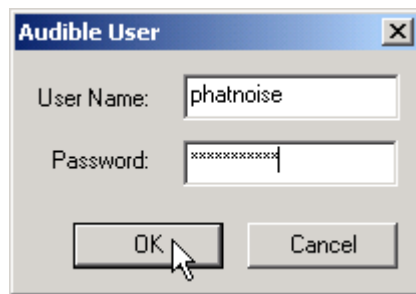


Existing Users - Click Here!

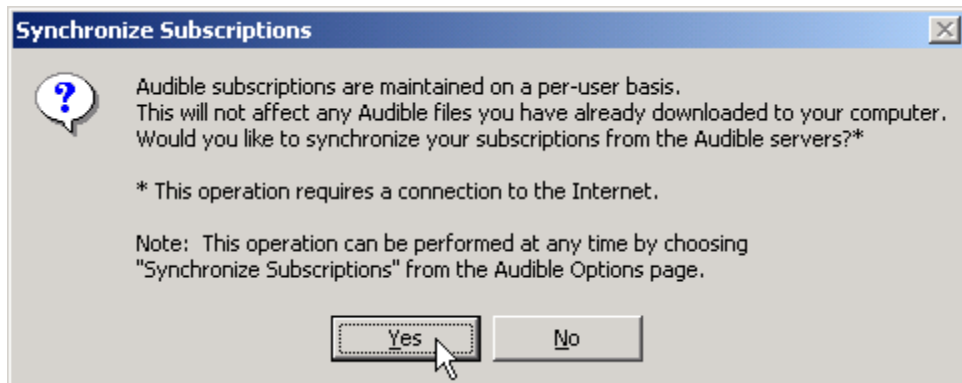
Click the Existing Users **Click Here!** Button if you already have an audible.com account.



Enter your audible.com username and password. Then press the **OK** button.

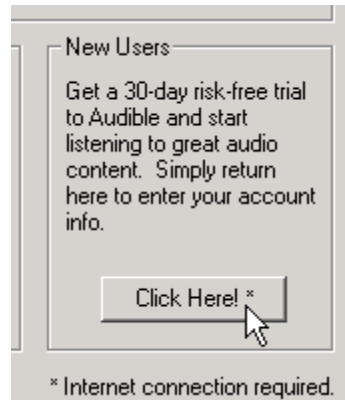


A dialog box will appear asking if you would like to synchronize your subscriptions with the Audible.com servers. We recommend you press the **Yes** button.



New Users - Click Here!

Click the New Users **Click Here!** Button to create a new audible.com account and take advantage of our special introductory offer.



You will be taken to the new user signup page at audible.com. Please follow the instructions on the site.

Once you have registered at the audible.com site, return back to the PhatNoise Music Manager. Now that you are a registered audible.com user, click the **Existing Users - Click Here!** button and follow the steps explained above.

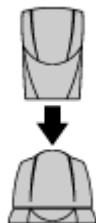
Once your audible.com username and password have been entered, you will be ready to download Audible content for use with the PhatNoise Music Manager and your PhatNoise Car Audio System.

Audible Content on the PhatNoise DMS

Audible files are transferred to the PhatNoise DMS in much the same way as mp3 files are transferred to the PhatNoise DMS. The only difference is that most Audible files are indexed according to chapter or section breaks in the content. A new track will be added for each index point. This will allow for easy navigation in the car.

To transfer Audible files to the PhatNoise DMS, follow these steps:

1. Insert the PhatNoise DMS cartridge into the USB cradle.



2. Click on the **Device View** button



3. Click on the "**PhatNoise DMS**" text under the All Supported Devices panel



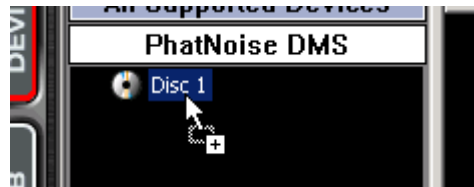
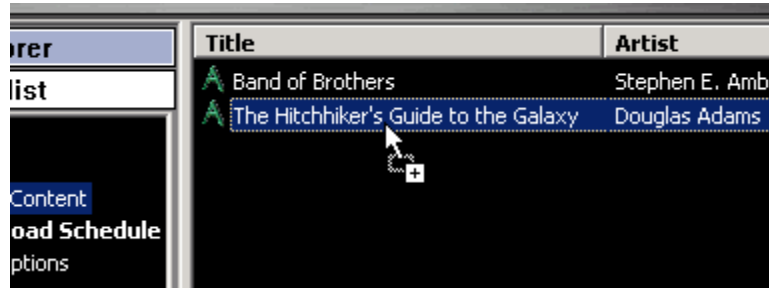
4. Click on the red GO button



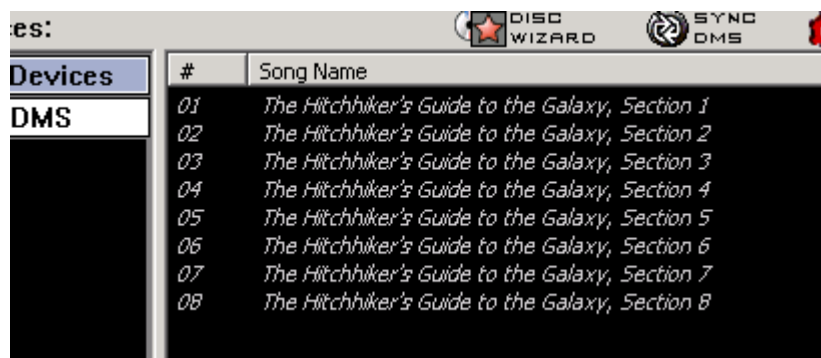
5. On the top portion of the Device view click on the "**All Audible Content**" text in the Playlist panel



6. Drag an audible file to a DMS disc



You will notice that the Audible file will be added, and each section break will correspond to a track on the PhatNoise DMS.



Assigning a track to each index point is meant to assist you in finding your place in longer audiobooks and/or periodicals.

Dynamic Audible Subscription Discs

It is possible to create discs that will automatically update with issues of Audible subscriptions. To create a dynamic audible subscription disc, follow these steps:

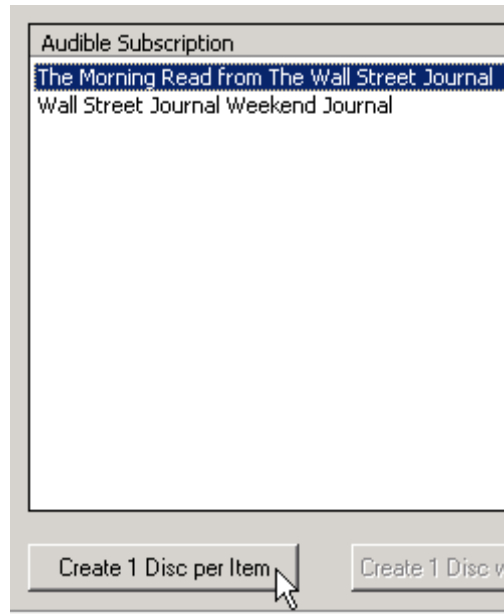
1. Click the **Disc Wizard** button from the PhatNoise DMS view.



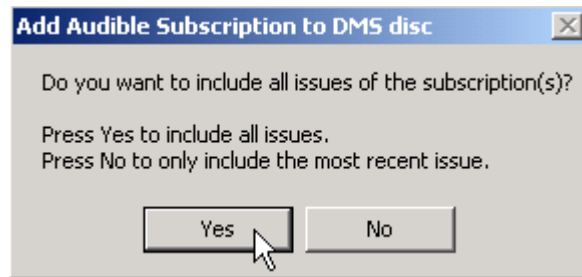
2. Choose "**Audible Subscriptions**" from the "Create From" drop down list.



3. Select one or more Audible subscriptions and click one of the Create buttons



4. You will then be asked if you'd like to include all of the issues of the subscription, or only the most recent issue. Click yes or no as desired.



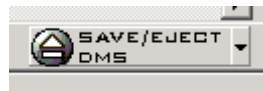
To update the Audible Subscription Discs

Discs will automatically be updated when you click the **Sync DMS** button.



Saving Your Changes

When you have finished organizing your Audible content, click the **SAVE/EJECT DMS** button.



Playing Audible content in your car

A playlist with Audible content on it will auto-resume. The Auto-resume feature allows the PhatBox to remember where playback stopped in a playlist.

For example, suppose you are listening to an Audible playlist and you switch to a different playlist. At any point you return to the Audible playlist, the PhatBox will remember where you left off and will resume at that point.

Appendix E: Contacting Customer Support

Need help? What goes where, compatibility, and troubleshooting?
Please feel free to contact your local Volkswagen or Audi Dealership or
contact us at:

For Volkswagen

Web: <http://www.phatnoise.com/vw>

Email: PhatNoise@vw.com

Phone: 1-877-ASK-PHAT (1-877-275-7428)

Call center is available 8:00am – 7:00pm EST Monday through Friday.

For Audi

Web: <http://www.phatnoise.com/audi>

Email: PhatNoise@audi.com

Phone: 1-877-ASK-PHAT (1-877-275-7428)

Call center is available 8:00am – 7:00pm EST Monday through Friday.