

HOW TO PAIR BLUETOOTH®²

To use the hands-free system³, it is necessary to pair a Bluetooth®² phone with the system. Once the phone has been paired, it is possible to use the hands-free system³. This operation cannot be performed while driving. (**NOTE:** The Bluetooth®² pairing process for Non-Navigation and Navigation¹ units differ, as noted below)

STEP 1 Turn the Bluetooth®² connection setting of your cellular phone ON. [See Figures 1 & 2]

- a. Pairing is not available when Bluetooth®² setting of your phone is set to OFF.

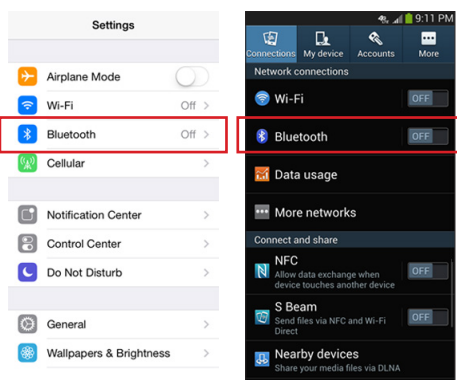


Figure 1: iOS

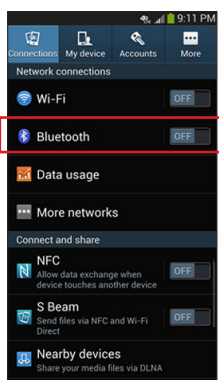


Figure 2: Android™

STEP 2 Press the “Phone” button to display the “Phone” screen. Touch “Yes” to register a phone. (Non-Navigation units – skip to step 4) [See Figure 3]

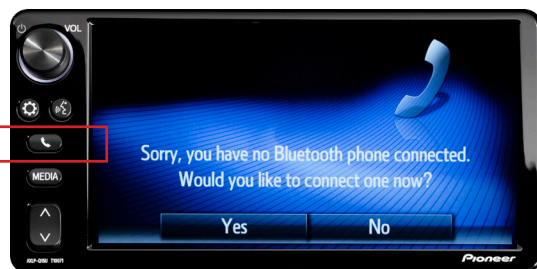


Figure 3

STEP 3 Touch the “Make system discoverable”^{**} button. [See Figure 4]

^{**} On Android™ devices, you will need to make your phone visible to searching devices.



Figure 4: With Navigation¹

STEP 4 Next, search for “My Toyota” from your phone’s Bluetooth®² screen and select “My Toyota” [See Figure 5]

- To cancel the registration, touch “Cancel”.

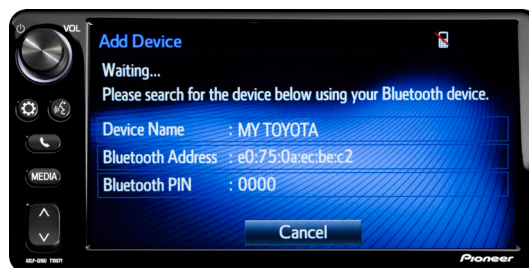


Figure 5: Without Navigation

STEP 5 A message will display on the head unit requesting messaging access.

For iPhone®⁴: Using your smartphone, you may need to allow head unit access to your messaging and contacts. [See Figure 6]

Only current iPhone®⁴ text messages can be viewed on the head unit. iPhone®⁴ does not allow text message reply.

For Android™: Using your smartphone, you may need to allow head unit access to your messaging and contacts. [See Figure 7]

It is recommended to check the “Don’t ask again” box, so as not to have to press OK every time the phone makes a Bluetooth®² connection with your Toyota.

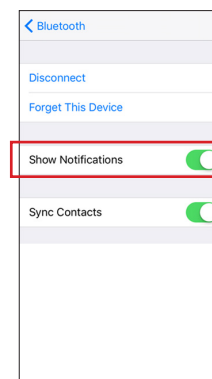


Figure 6: iOS

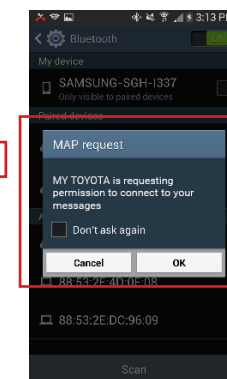


Figure 7: Android™

STEP 6 Touch “OK” when the connection status changes from “Connection waiting...” to “Connected”.

STEP 7 For Navigation¹ Units Only: Confirm that the passkey number displayed on screen matches the passkey displayed on your Bluetooth®² device and press “Yes”.

A message will display on the head unit requesting messaging access. Please refer to step 5.

1. Availability & accuracy of the information provided by the navigation system is dependent upon many factors. Use common sense when relying on information provided. Services & programming subject to change. Services not available in every city or roadway. Updates may be available from your dealer at an additional cost. See Owner’s Manual for details. 2. The Bluetooth® word mark and logos are registered trademarks owned by Bluetooth® SIG, Inc. and any use of such marks by Toyota is under license. A compatible Bluetooth® enabled phone must first be paired. Phone performance depends on software, coverage & carrier. 3. Concentrating on the road should always be your first priority while driving. Do not use the hands-free phone system if it will distract you. 4. iPhone® is not included. iPhone® is registered trademarks of Apple, Inc.