



11105 - Alloy Axle Tube Seal (Red)
11106 - Alloy Axle Tube Seal (Black)

Dana 30, Dana 44 axle tube seal Installation Instructions

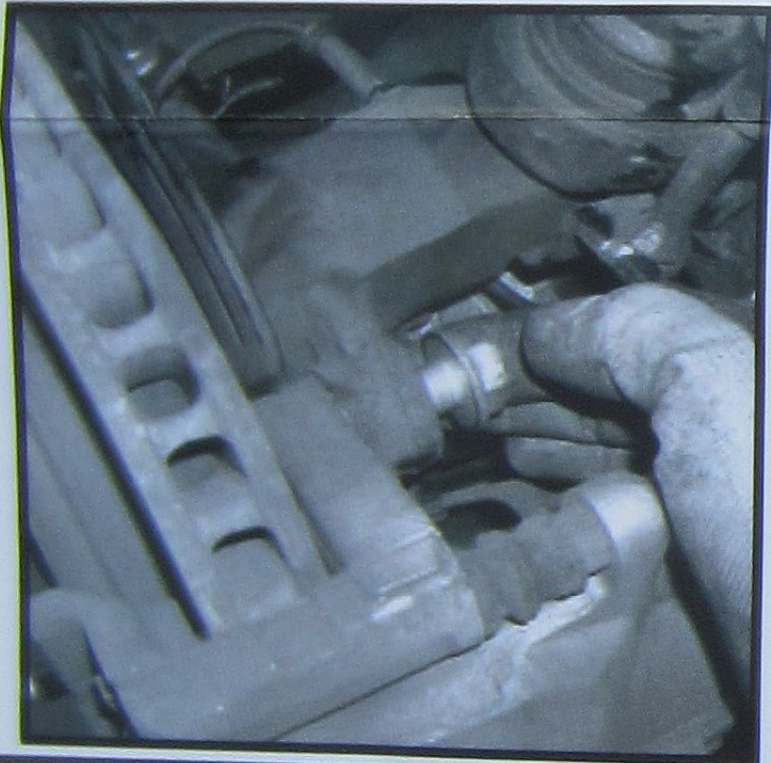
Contents:
(1set) Axle Tube Seals



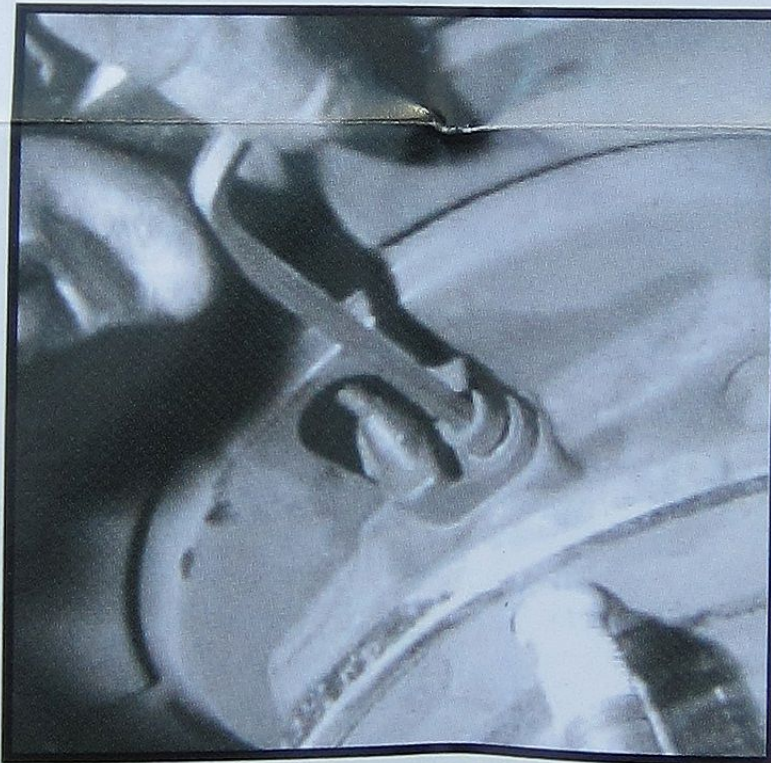
CAUTION: Before installing axle tube seals make sure that the vehicle has been placed in gear and the emergency brake is set. Read instructions fully before proceeding with installation.

NOTICE: The Axle Seals are designed to help control and minimize dirt, rocks, and mud from entering the axle tubes. They are not intended for use as an oil seal. Because the inner axle tube surface and the axles themselves do not have a clean machined surface these seals can not control large amounts of gear oil from leaking. To control the amount of gear oil in the axle tubes all inner seals should be replaced at this time. The ALLOY USA tubes seals are not intended to control gear oil leaks caused by failed inner axle seals.

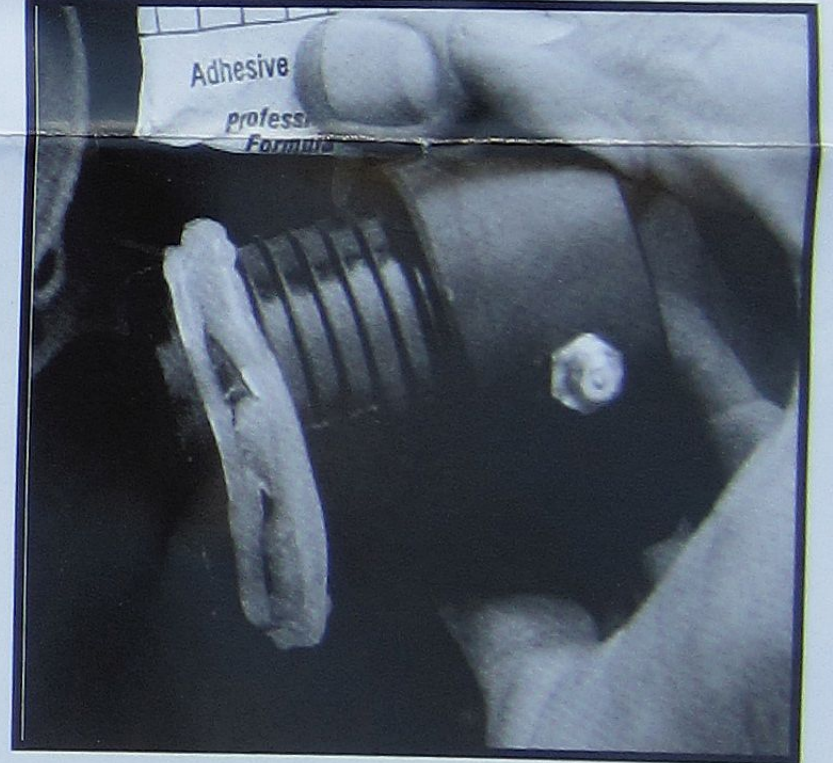
1. Place vehicle in gear and set emergency brake. Place jack stands under axle tube and confirm vehicle is stable. Remove tire and brake caliper from front axle assemble.



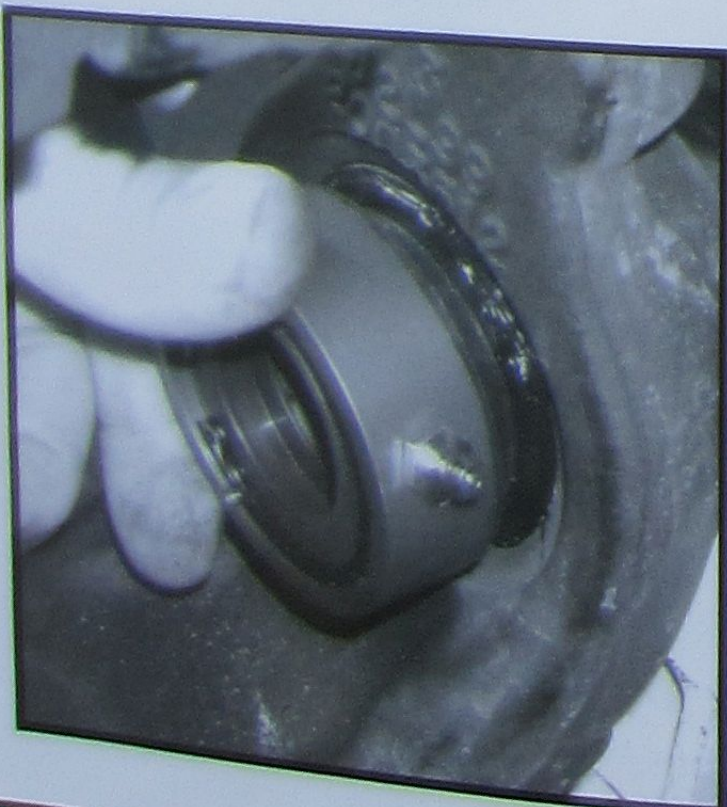
2. Following shop manual procedures remove inner axle assemble from vehicle. JK models will need to have speed sensor removed from unit bearing before axle can be pulled.



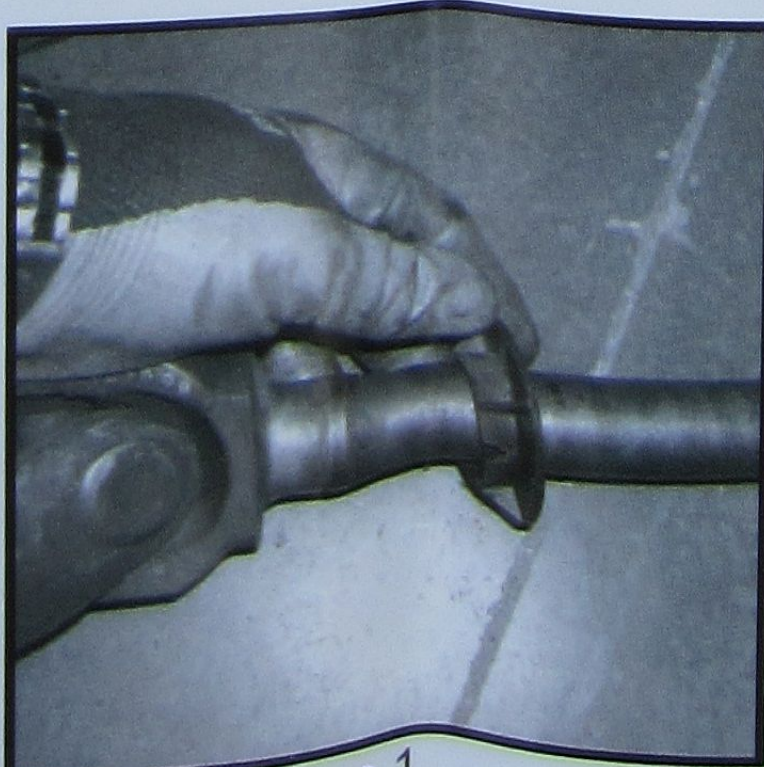
3. Clean inner axle tube surface. Steel wool should be used to remove all dirt & surface rust. Test fit seal to tube. Axle tube seal should fit snug. Remove tube seal and apply RTV silicone to tube seal as shown.



4. Press axle tube seal into housing noting zerk fitting location. Allow silicone to cure fully. Driving vehicle before silicon has cured may result in failure of seal.



5. Remove factory plastic tube guard from axle. Apply grease to both the axle tube seal and axle. slide axle back into axle housing. Tighten bolts securing unit bearing and axle.



6. For JK applications check clearance of seal housing to stub shaft. Clearance should be 1-2mm. Install brake caliper and tire. Liberally add grease to seal. Repeat for other side.

